



LYDHURST AVENUE, SW2

£575,000

- Excellent condition
- Three bedrooms
- Great location
- Private garden
- Split-level flat
- Energy rating: D





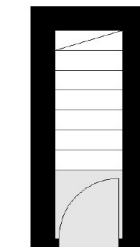
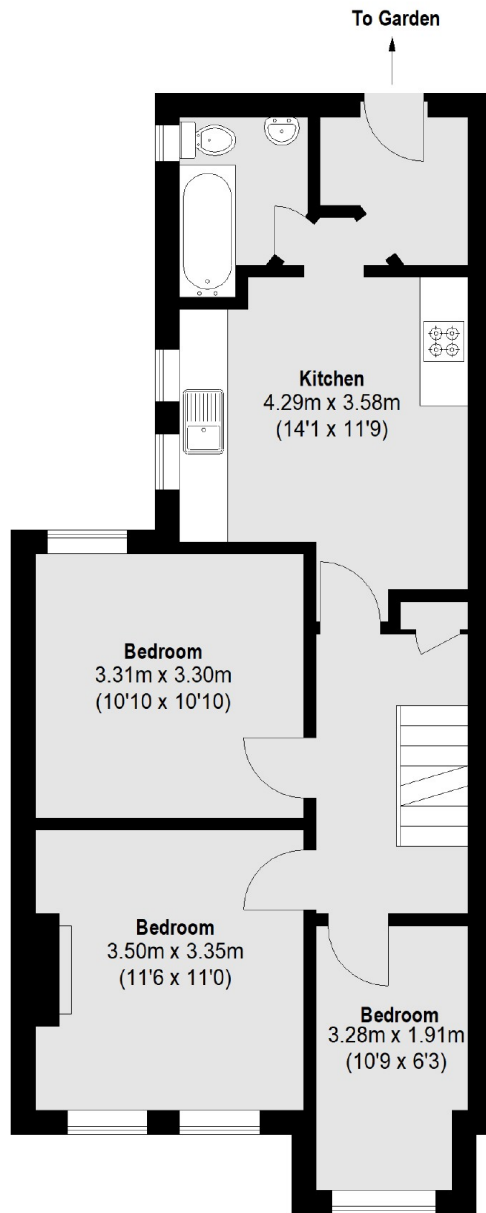
ABOUT THE HOME

A well presented three bedroom, split-level maisonette on a sought after road in the heart of Streatham Hill.

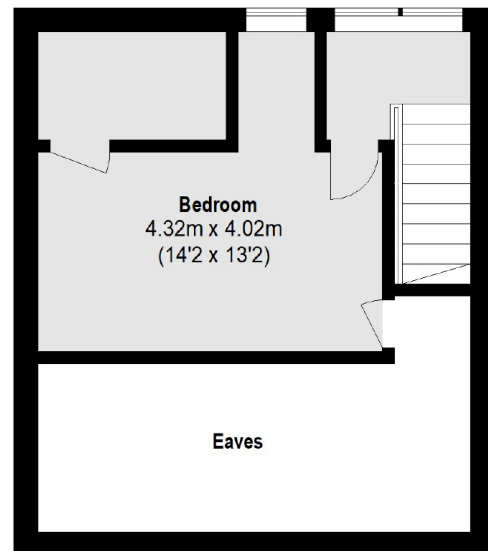
Lydhurst Avenue is located within close proximity to Streatham High Road's variety of bars, shops and restaurants. There are numerous bus links into the City with Streatham Hill station offering links into Balham (Northern Line), Clapham Junction and London Victoria. Tulse Hill station is also nearby.







Ground Floor



Second Floor

First Floor

Total area (approx.): 81.90 sq. m (881 Sq. ft)
(Excluding Eaves)

JACKSONS STREATHAM

1-3 De Montfort Parade,
Streatham High Road,
Sales: 020 8487 3179
Lettings: 020 8487 3180

Energy Rating: D We aim to make our particulars both accurate and reliable. However they are not guaranteed; nor do they form part of an offer or contract. If you require clarification on any points then please contact us, especially if you're traveling some distance to view. Please note that appliances and heating systems have not been tested and therefore no warranties can be given as to their good working order.