



Fairview Road, SW16

£2,400 PCM

A semi-detached three double bedroom house. Ideal for three professional sharers, the property is moments from Norbury train station.

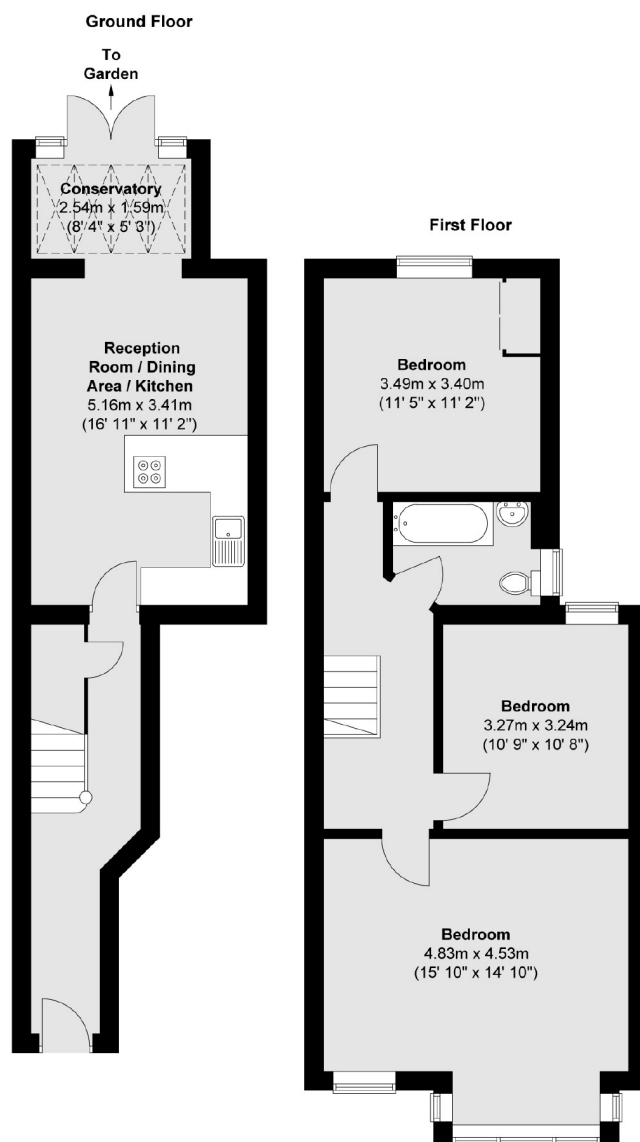
- End of Terraced House
- Three bedroom
- Newly renovated
- Open plan
- Close to Norbury Train Station
- Energy rating: C

For further information on the costs associated with renting a property, please pop into our office or visit our website.



Fairview Road is located off Norbury High Street with it's many shops, restaurants and transport links easily accessible.





Total area (approx.) : 88.7 sq. m (955 sq. ft)

Jacksons Streatham
1-3 De Montfort Parade
Streatham High Road
Streatham
London
SW16 1BU

Energy Rating: We aim to make our particulars both accurate and reliable. However they are not guaranteed; nor do they form part of an offer or contract. If you require clarification on any points then please contact us, especially if you're traveling some distance to view. Please note that appliances and heating systems have not been tested and therefore no warranties can be given as to their good working order.