



Westcote Road, SW16

£2,850 PCM

A four double bedroom house, ideal for four sharers, featuring two modern bathrooms, a bright and spacious reception room, a modern fitted kitchen and two private courtyards.

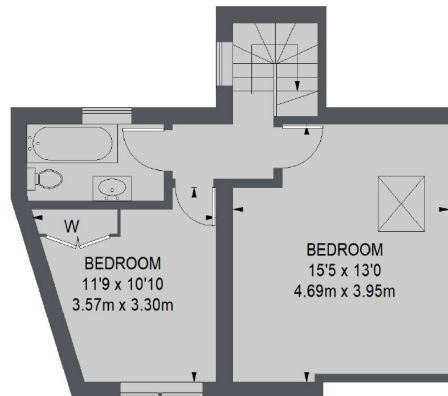
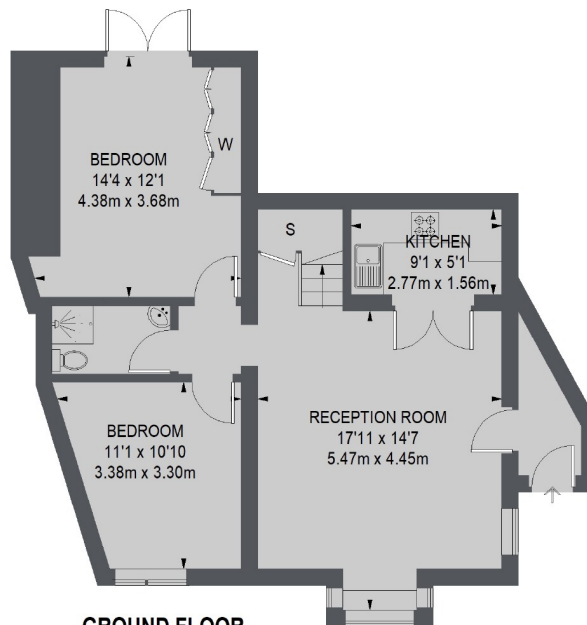
- Newly Refurbished
- Four Double Bedrooms
- Two Bathrooms
- Two Courtyards
- Modern Fixtures & Fittings
- Furnished

For further information on the costs associated with renting a property, please pop into our office or visit our website.



Located in Wandsworth Borough, the property is very well located for both Streatham Common and Streatham train stations as well as many local shops, bars and restaurants.




FIRST FLOOR

GROUND FLOOR

TOTAL APPROX. FLOOR AREA
1100 SQ. FT. (102.18 SQ. M.)

Jacksons Streatham
1-3 De Montfort Parade
Streatham High Road
Streatham
London
SW16 1BU

Energy Rating: D We aim to make our particulars both accurate and reliable. However they are not guaranteed; nor do they form part of an offer or contract. If you require clarification on any points then please contact us, especially if you're traveling some distance to view. Please note that appliances and heating systems have not been tested and therefore no warranties can be given as to their good working order.