



BEWLYS ROAD, SE27

£850,000

- Four double bedrooms
- Corner plot
- Large front and rear garden
- Potential to extend
- Huge Driveway
- Energy rating: D

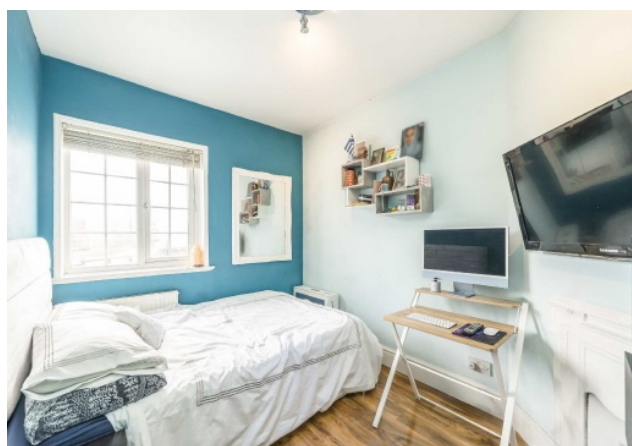




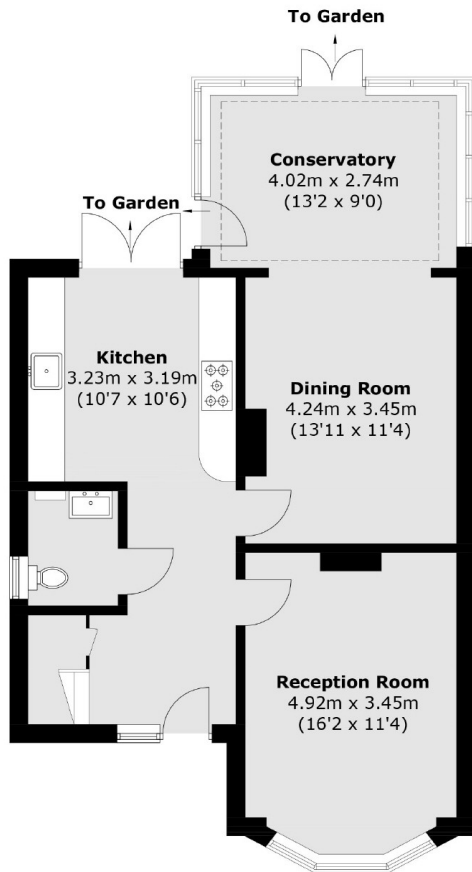
ABOUT THE HOME

A wonderful four bedroom family home located in West Norwood. The property has a large front garden as well as rear benefitting being a corner plot with potential to extend further.

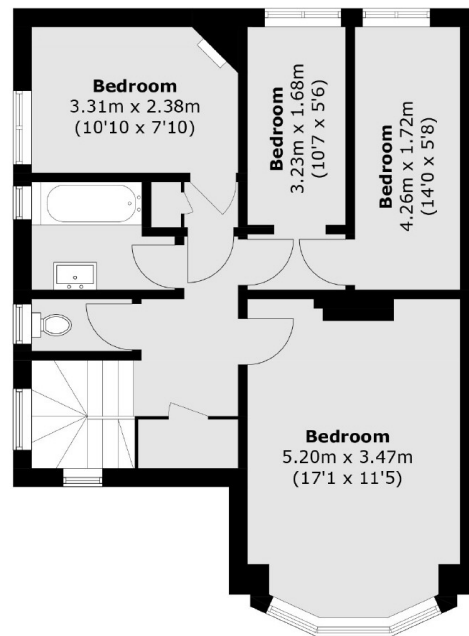
Bewlys Road offers an ideal location, providing easy access to the numerous amenities of West Norwood High Street. There are a number of commuting options including links to London Victoria and London Bridge. The property is also conveniently close to the shops, bars, and restaurants of the high street and the open spaces of Streatham Common and Norwood Park. Additionally, Dunraven and Hitherfield are just a short walk from Bewlys Road.







Ground Floor



First Floor

Total area (approx.): 128.0 sq. m (1,377.7 sq. ft)

JACKSONS STREATHAM

1-3 De Montfort Parade,
Streatham High Road,
Sales: 020 8487 3179
Lettings: 020 8487 3180

Energy Rating: D We aim to make our particulars both accurate and reliable. However they are not guaranteed; nor do they form part of an offer or contract. If you require clarification on any points then please contact us, especially if you're traveling some distance to view. Please note that appliances and heating systems have not been tested and therefore no warranties can be given as to their good working order.