



MOUNT EPHRAIM LANE, SW16

£1,500,000

- Victorian family home
- South facing garden
- Five bedrooms
- Close To Tooting Bec Common
- Excellent condition
- Energy rating: D

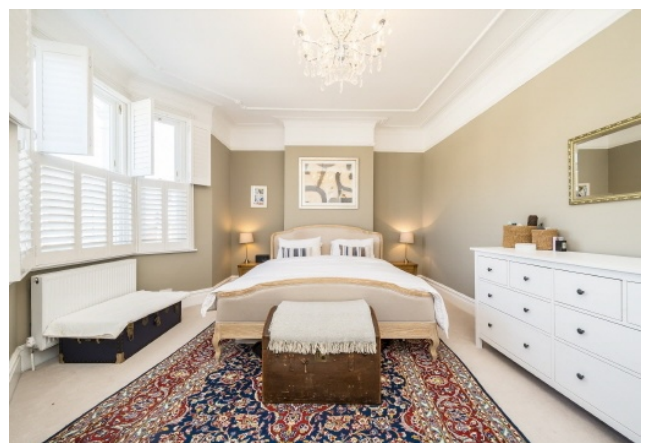




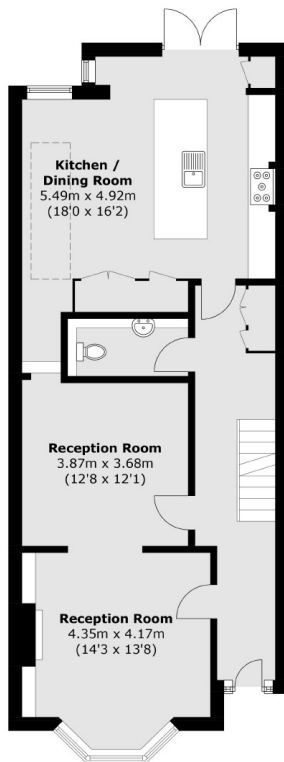
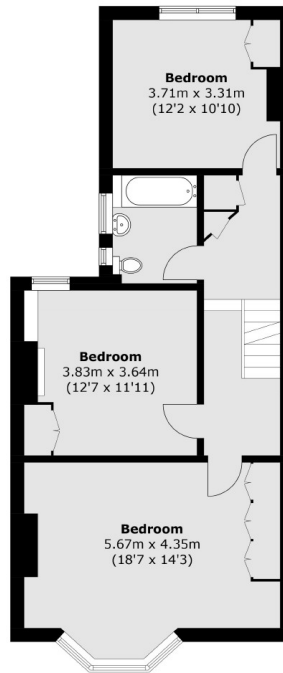
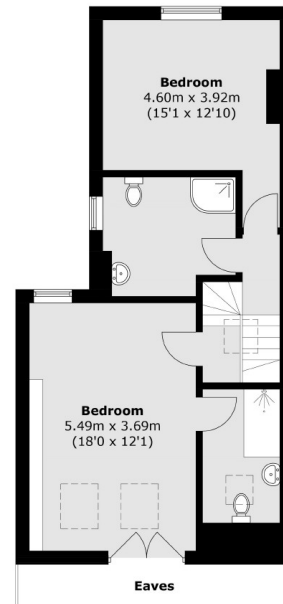
ABOUT THE HOME

A five bedroom Victoria terraced house, in excellent condition in the heart of Streatham Hill. The property has retained Victorian features throughout which accentuate this great family home.

Mount Ephraim Lane is a highly desirable tree lined road situated in the heart of Streatham Hill within reach of amenities from both Streatham High Road and Balham as well as being close to Tooting Bec Common. In addition there are a number of outstanding schools within catchment including Henry Cavendish Primary School. Commuters have easy access to numerous transport links including Streatham Hill station with regular trains to London Victoria and numerous bus routes to the City via Brixton.






Basement

Ground Floor

First Floor

Second Floor

Total area (approx.): 211.9 sq. m (2,280.8 sq. ft)
(Excluding Eaves)

JACKSONS STREATHAM

1-3 De Montfort Parade,
Streatham High Road,
Sales: 020 8487 3179
Lettings: 020 8487 3180

Energy Rating: E We aim to make our particulars both accurate and reliable. However they are not guaranteed; nor do they form part of an offer or contract. If you require clarification on any points then please contact us, especially if you're traveling some distance to view. Please note that appliances and heating systems have not been tested and therefore no warranties can be given as to their good working order.