



KEMPSHOTT ROAD, SW16

£1,750,000

- Double fronted house
- Driveway & garage
- Five double
- Open plan kitchen
- Large south facing garden
- Energy rating: to be confirmed







## ABOUT THE HOME

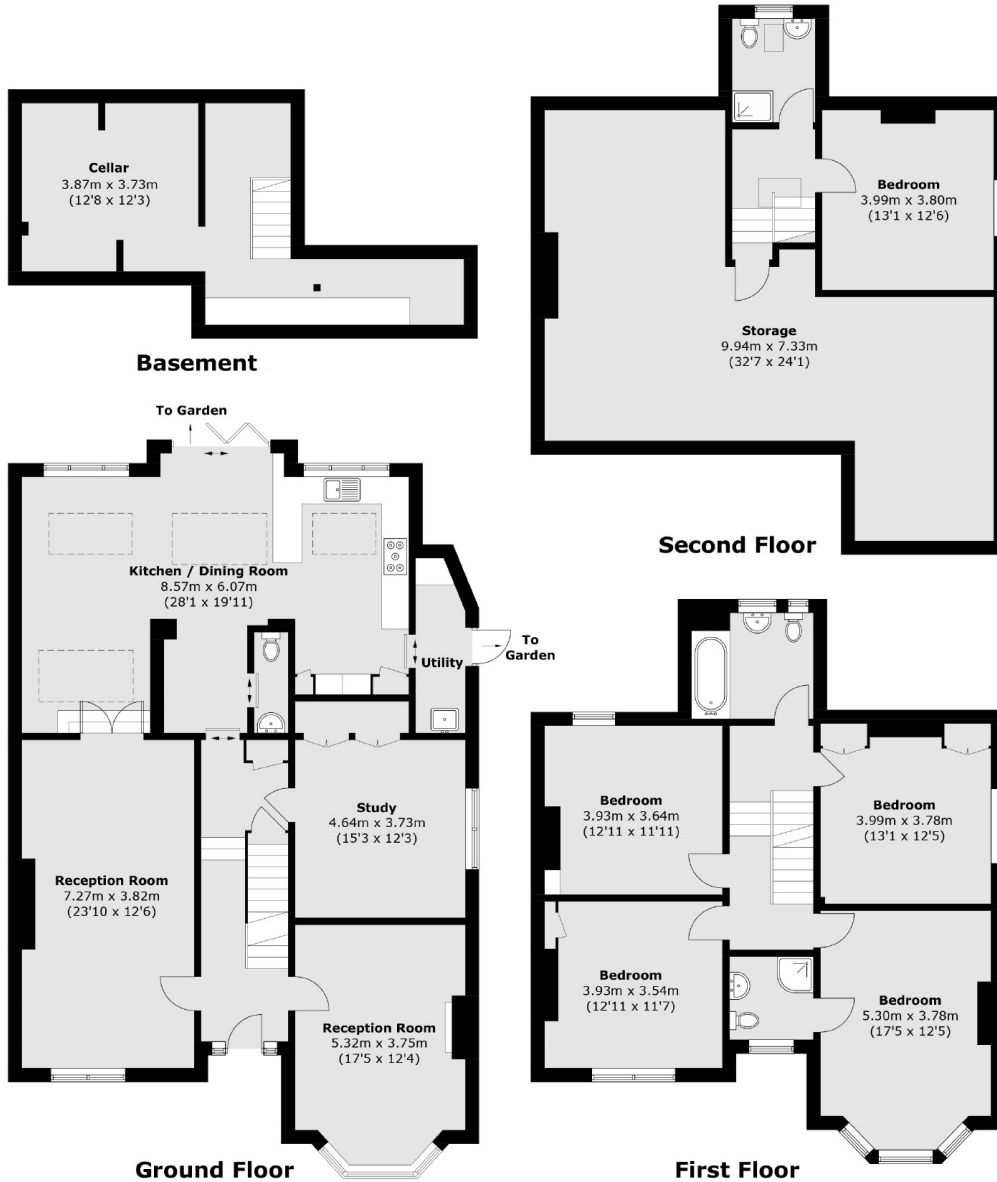
An impressive, double fronted family home moments from Streatham Common. Offering a large open plan kitchen/dining room, five double bedrooms, 3260 sq foot, driveway with separate garage and a south facing garden.

Ideally located for access to Streatham Common, with its woodlands, Nature Reserve and Rookery gardens. This house is moments away from Streatham's hub of transport connections and amenities as well as many local schools and nurseries. These include numerous bars, independent coffee shops, restaurants, local deli's, large supermarkets and a leisure centre which includes a public swimming pool and ice rink. Commuters are able to access London Bridge, Blackfriars, St Pancras and Victoria with swift services from the local railway stations. The bus links also provide services direct to Brixton tube station within a short journey of fifteen minutes.









Total area (approx.): 302.9 sq. m (3,260.4 sq. ft)  
 Basement area (approx.): 30.1 sq. m (324.0 sq. ft)

### JACKSONS STREATHAM

1-3 De Montfort Parade,  
 Streatham High Road,  
 Sales: 020 8487 3179  
 Lettings: 020 8487 3180

Energy Rating: We aim to make our particulars both accurate and reliable. However they are not guaranteed; nor do they form part of an offer or contract. If you require clarification on any points then please contact us, especially if you're traveling some distance to view. Please note that appliances and heating systems have not been tested and therefore no warranties can be given as to their good working order.