



CORSEHILL STREET, SW16

£800,000

- Victorian terrace house
- Four bedrooms
- Loft extended
- Well presented
- Open plan kitchen
- Energy rating: D





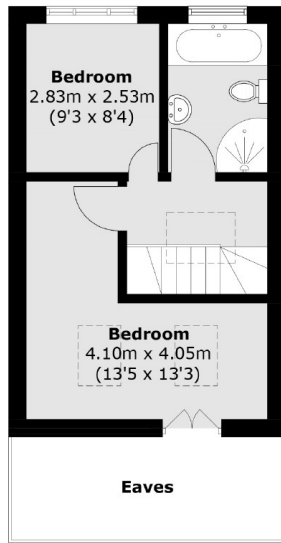
ABOUT THE HOME

A recently refurbished charming four bedroom Victorian terraced property, located in the heart of Furzedown. The property blends period features as well as a modern finish and has potential to extend further.

Corsehill Street is on a quiet road in Furzedown and conveniently located walking distance from Tooting Bec Common and Streatham Common, with the array of local amenities. Commuters have regular transport links via both Streatham and Streatham Common mainline station's as well as Northern Line from Tooting Broadway.

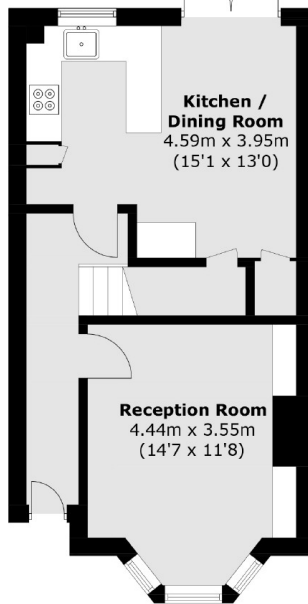




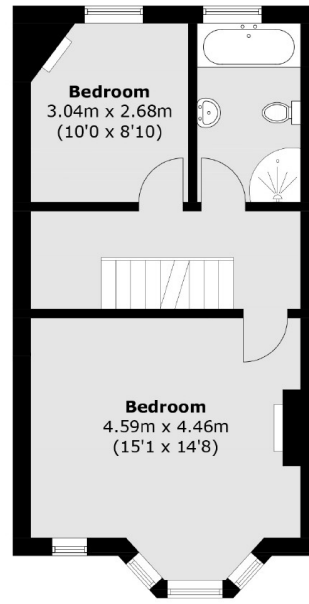


Second Floor

To Garden



Ground Floor



First Floor

Total area (approx.): 110.2 sq. m (1,186.2 sq. ft)
(Excluding Eaves)

JACKSONS STREATHAM

1-3 De Montfort Parade,
Streatham High Road,
Sales: 020 8487 3179
Lettings: 020 8487 3180

Energy Rating: D We aim to make our particulars both accurate and reliable. However they are not guaranteed; nor do they form part of an offer or contract. If you require clarification on any points then please contact us, especially if you're traveling some distance to view. Please note that appliances and heating systems have not been tested and therefore no warranties can be given as to their good working order.