



## WOODLEIGH GARDENS, SW16

£575,000

- Ground floor maisonette
- Excellent condition
- Private garden
- Two bedrooms
- Open plan kitchen diner
- Energy rating: C







## ABOUT THE HOME

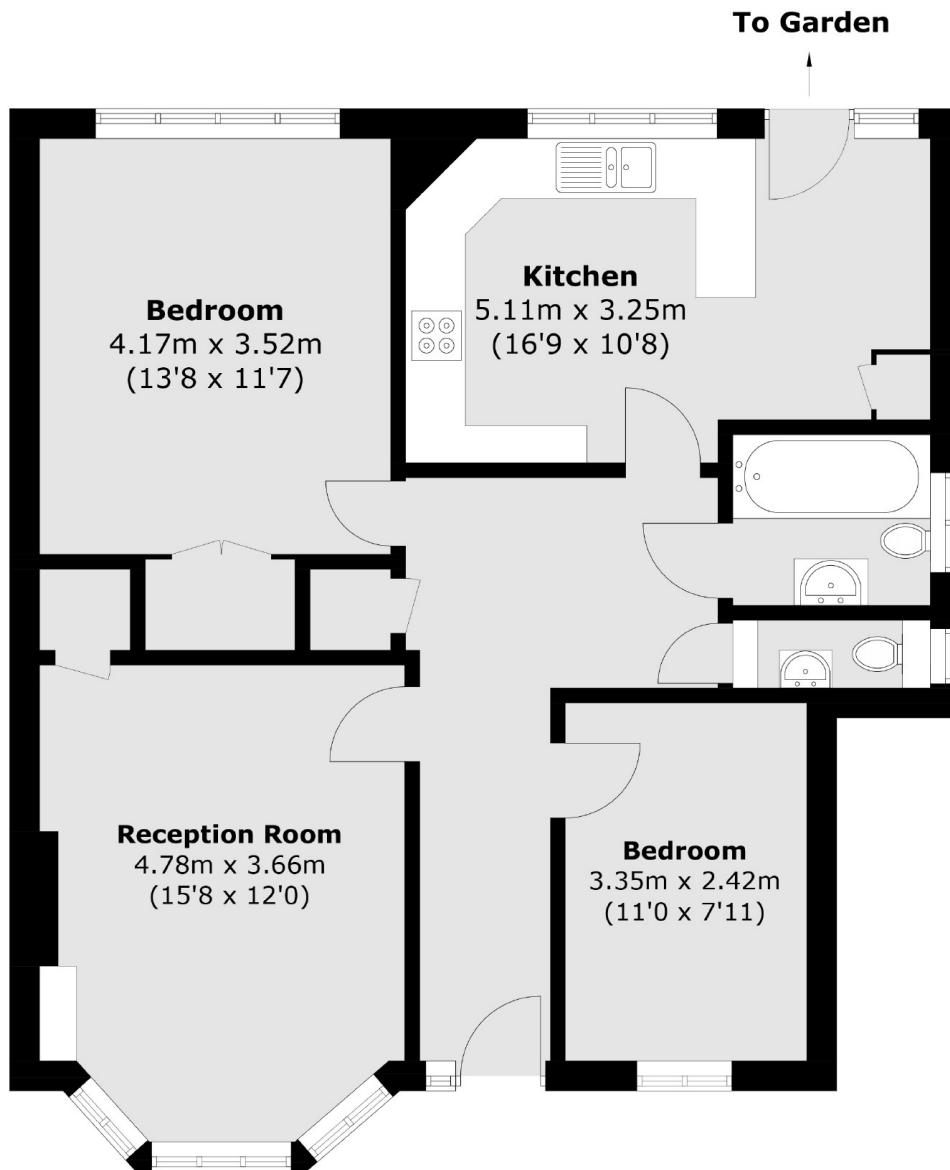
An immaculately presented ground floor maisonette with a large south west facing rear garden. This property further benefits from two sizeable bedrooms and great amenities nearby.

Woodleigh Gardens is perfectly placed for the amenities of Streatham High Road and is within easy reach of Streatham Hill mainline station providing rail links to London Victoria via Clapham Junction. The shops, bars and restaurants of the high road and the wide expanses of Tooting Common are all within close proximity.









Total area (approx.): 80 sq. m (861.1 sq. ft)

#### **JACKSONS STREATHAM**

1-3 De Montfort Parade,  
Streatham High Road,  
Sales: 020 8487 3179  
Lettings: 020 8487 3180

Energy Rating: C We aim to make our particulars both accurate and reliable. However they are not guaranteed; nor do they form part of an offer or contract. If you require clarification on any points then please contact us, especially if you're traveling some distance to view. Please note that appliances and heating systems have not been tested and therefore no warranties can be given as to their good working order.