



BABINGTON ROAD, SW16

£475,000

- Private south facing garden
- Two double bedrooms
- Share of freehold
- Excellent condition
- Nearby Tooting Bec Common
- Energy rating: D





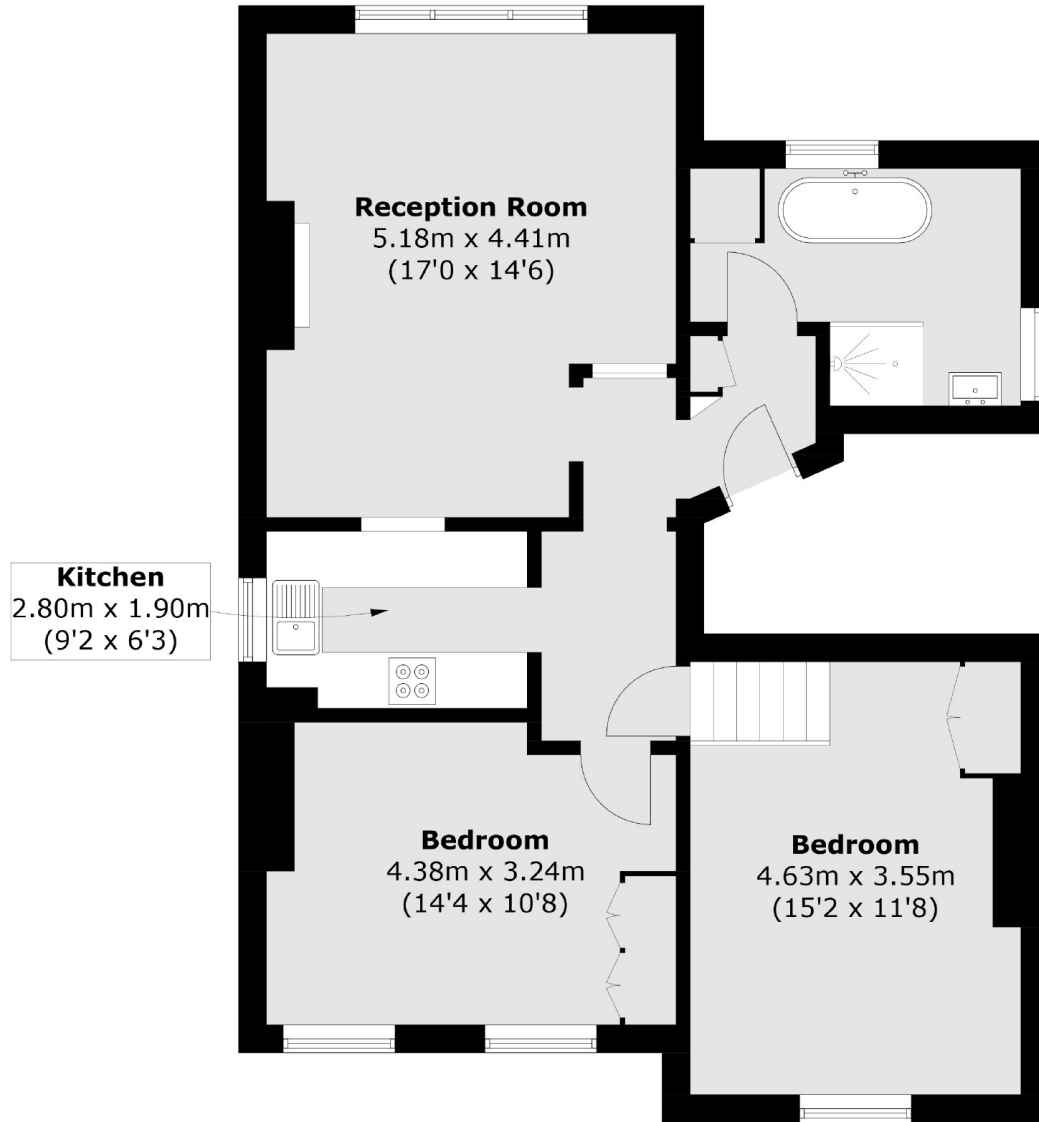
ABOUT THE HOME

A split level, first floor period maisonette in excellent condition situated on a residential road in between Tooting Bec Common and Streatham Station.

Babington Road is within close proximity of the major transport connections of Streatham main station and Streatham Common Station providing swift routes to London Bridge and Victoria respectively. Residents have easy access to an array of amenities including a number of independent cafés, restaurants, bars and pubs. Tooting Bec is also nearby.







Total area (approx.): 74.6 sq. m (802.9 sq. ft)

JACKSONS STREATHAM

1-3 De Montfort Parade,
Streatham High Road,
Sales: 020 8487 3179
Lettings: 020 8487 3180

Energy Rating: D We aim to make our particulars both accurate and reliable. However they are not guaranteed; nor do they form part of an offer or contract. If you require clarification on any points then please contact us, especially if you're traveling some distance to view. Please note that appliances and heating systems have not been tested and therefore no warranties can be given as to their good working order.