



THURLOW PARK ROAD, SE21

£350,000

- One bedroom
- Victorian conversion
- Immaculate condition
- Chain free
- Open plan kitchen/living
- Energy rating: D



1



1



1



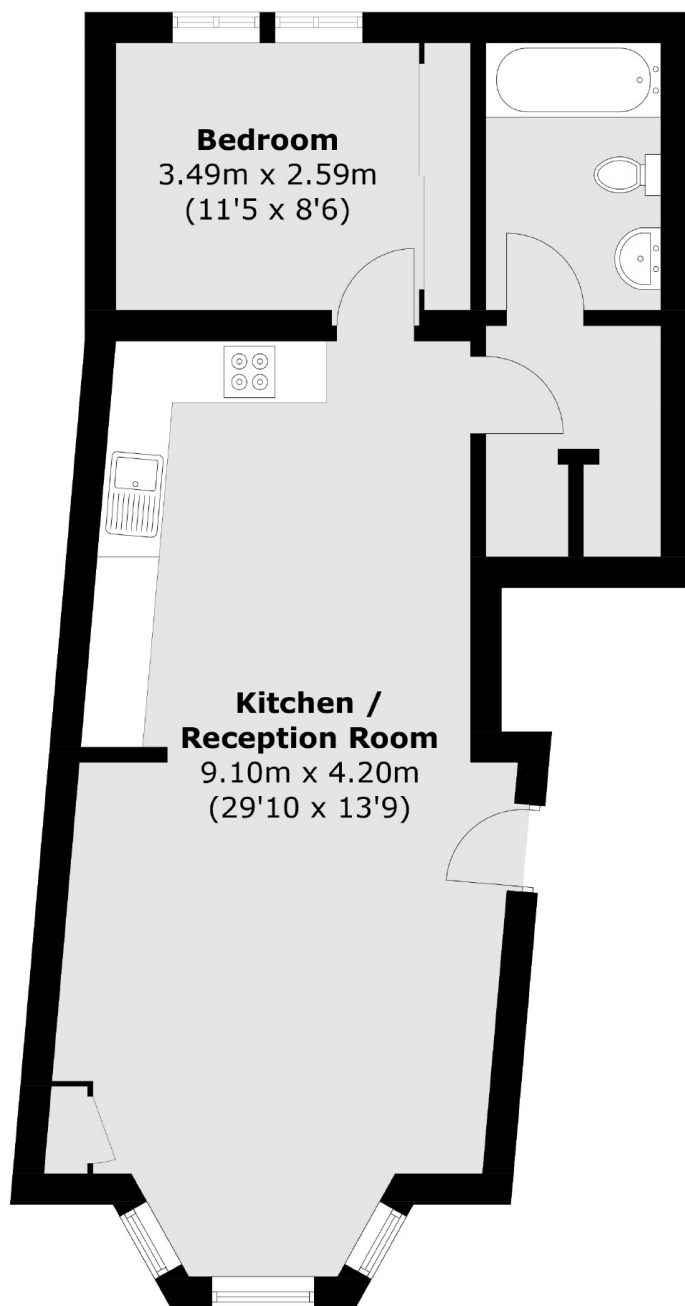
ABOUT THE HOME

An immaculate one bedroom conversion flat in the heart of West Dulwich. The property is in excellent condition, and benefits from being ideally located for amenities and transport.

Thurlow Park Road is in the heart of West Dulwich providing easy access to the fantastic amenities of Dulwich Village and Herne Hill, including their many cafe's, restaurants, bars, shopping and leisure facilities and green spaces. Tulse Hill station is nearby providing the Thameslink service into the city and West Dulwich providing services to London Victoria.







Total area (approx.): 53.3 sq. m (573.7 sq. ft)

JACKSONS STREATHAM

1-3 De Montfort Parade,
Streatham High Road,
Sales: 020 8487 3179
Lettings: 020 8487 3180

Energy Rating: D We aim to make our particulars both accurate and reliable. However they are not guaranteed; nor do they form part of an offer or contract. If you require clarification on any points then please contact us, especially if you're traveling some distance to view. Please note that appliances and heating systems have not been tested and therefore no warranties can be given as to their good working order.