



EASTWOOD STREET, SW16

£1,100,000

- High-spec Victorian house
- Three double bedrooms
- Bespoke open plan kitchen
- High spec loft conversion
- Popular and quiet location
- Energy rating: D



3



2



2



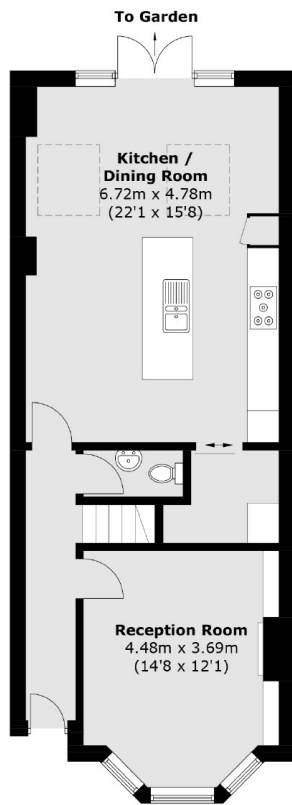
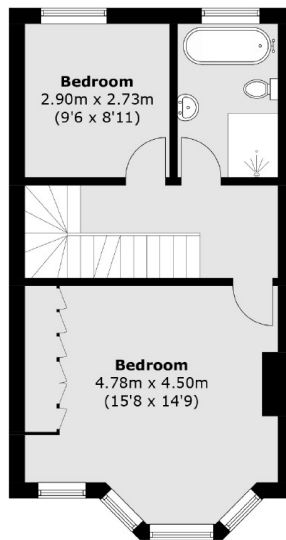
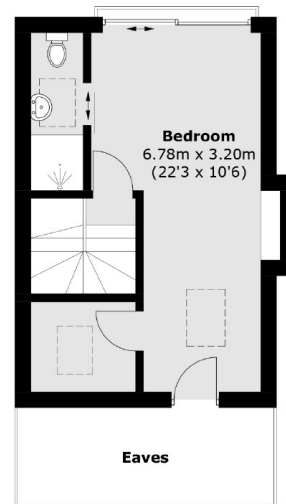
ABOUT THE HOME

A recently refurbished, fully extended and high spec three bed Victorian house on a quiet and desirable road in southern Furzedown. The house has been finished off to a high standard whilst retaining many original period features.

Eastwood Street is in a desirable location, within walking distance of Streatham Common and The Rookery. There are excellent transport links with several bus routes and Zone 3 Norbury train station is just a 10-minute walk away.






Ground Floor

First Floor

Second Floor

Total area (approx.): 134.3 sq. m (1,445.5 sq. ft)
(Excluding Eaves)

JACKSONS STREATHAM

1-3 De Montfort Parade,
Streatham High Road,
Sales: 020 8487 3179
Lettings: 020 8487 3180

Energy Rating: D We aim to make our particulars both accurate and reliable. However they are not guaranteed; nor do they form part of an offer or contract. If you require clarification on any points then please contact us, especially if you're traveling some distance to view. Please note that appliances and heating systems have not been tested and therefore no warranties can be given as to their good working order.