



WESTCOTE ROAD, SW16

£650,000

- Victorian terrace house
- Three Bedrooms
- Extension potential
- Private parking
- Large private garden
- Energy rating: D





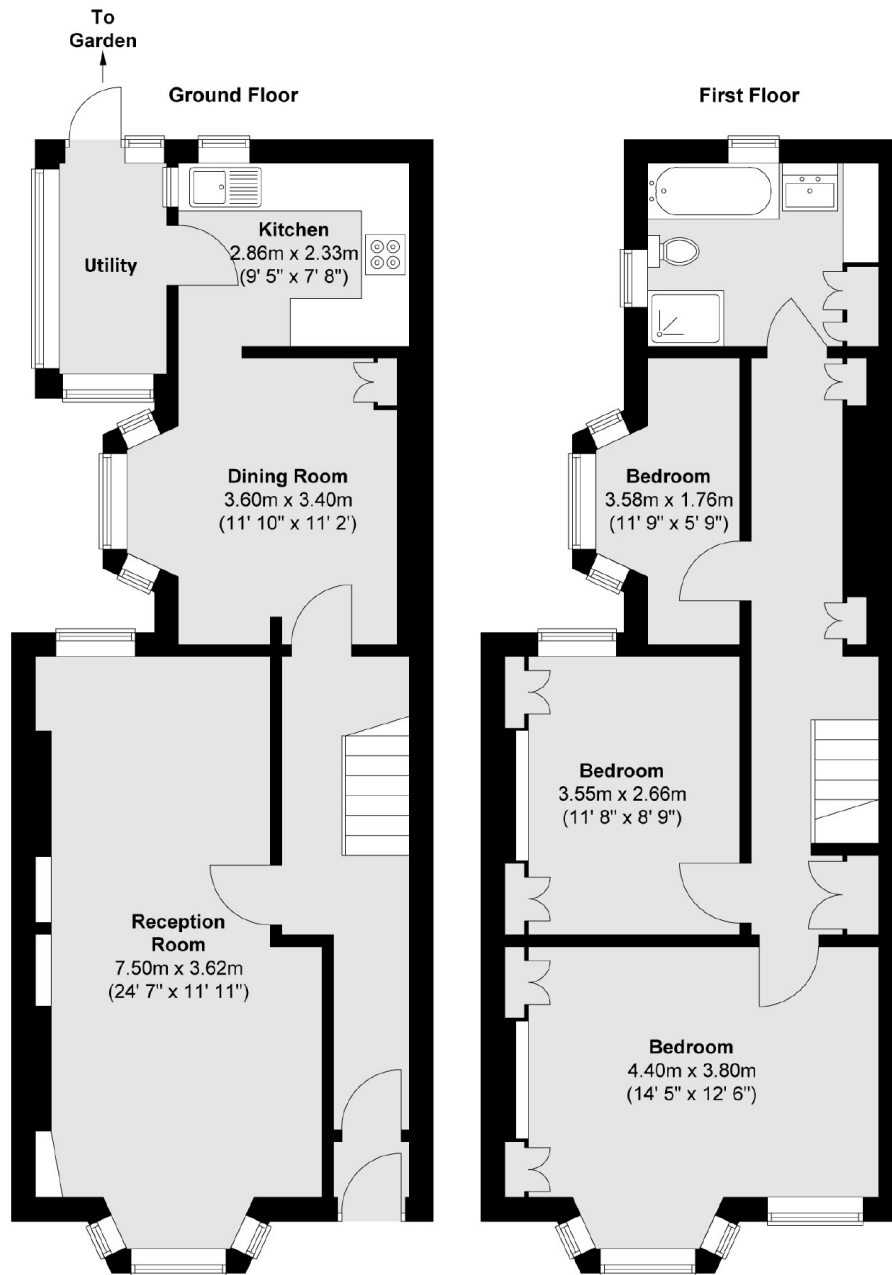
ABOUT THE HOME

A three bedroom, Victorian terrace house in need of work, benefiting from a large garden and off street parking.

Westcote Road is located within close proximity to the vibrant town centres of Tooting and Streatham which offer a diverse range of retail and leisure facilities as well as good transport links into Central London.







Total area (approx.) : 108.3 sq. m (1166 sq. ft)

JACKSONS STREATHAM

1-3 De Montfort Parade,
Streatham High Road,
Sales: 020 8487 3179
Lettings: 020 8487 3180

Energy Rating: D We aim to make our particulars both accurate and reliable. However they are not guaranteed; nor do they form part of an offer or contract. If you require clarification on any points then please contact us, especially if you're traveling some distance to view. Please note that appliances and heating systems have not been tested and therefore no warranties can be given as to their good working order.