



SHERWOOD AVENUE, SW16

£675,000

- End of terrace home
- Three bedrooms
- Quiet residential road
- Large garden
- Off-street parking
- Energy rating: E





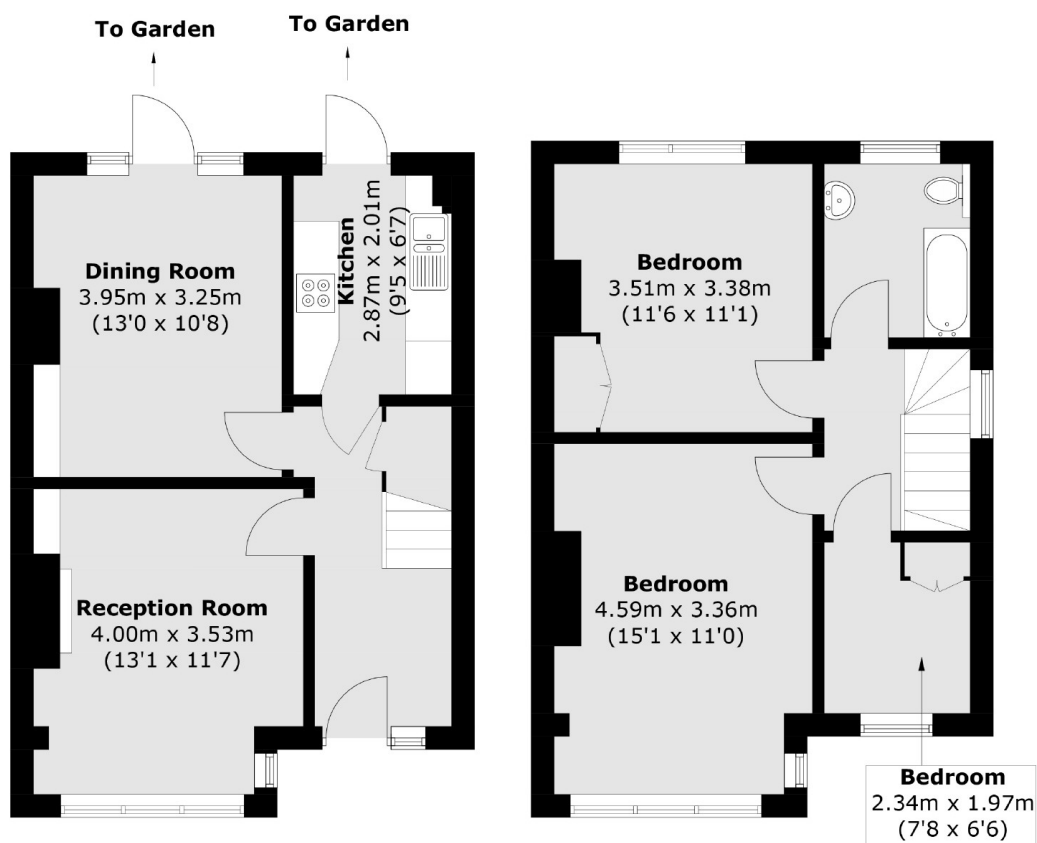
ABOUT THE HOME

A very well presented three bedroom family home, situated on a corner position giving a larger than average garden and off-street parking.

Sherwood Avenue is a well-situated, quiet residential road located in Streatham Vale affording easy access to Streatham Common Station. It is close to the green open spaces of Streatham Common, and within easy walking distance of Greyhound Lane with its developing mini high street. Commuters can readily access bus routes into Brixton and beyond, and there are swift connections direct to both London Victoria (via Clapham Junction) and London Bridge from Streatham Common Station.







Ground Floor

First Floor

Total area (approx.): 84.7 sq. m (911.7 sq. ft)

JACKSONS STREATHAM

1-3 De Montfort Parade,
Streatham High Road,
Sales: 020 8487 3179
Lettings: 020 8487 3180

Energy Rating: E We aim to make our particulars both accurate and reliable. However they are not guaranteed; nor do they form part of an offer or contract. If you require clarification on any points then please contact us, especially if you're traveling some distance to view. Please note that appliances and heating systems have not been tested and therefore no warranties can be given as to their good working order.