



WAVERTREE ROAD, SW2

£700,000

- Large Edwardian conversion
- Split level w. four bedrooms
- High spec finish throughout
- Private garden
- Circa,1500sqft
- Energy rating: E

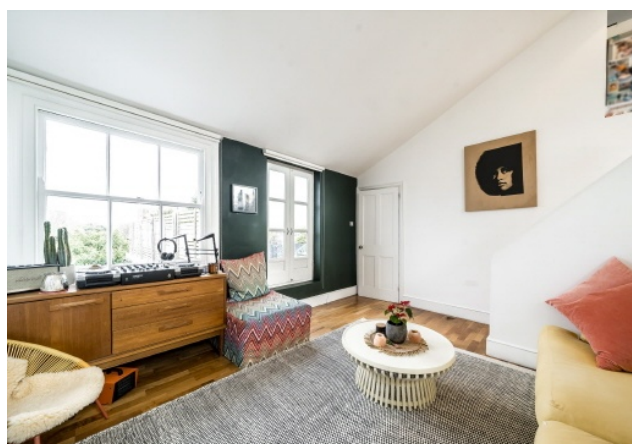




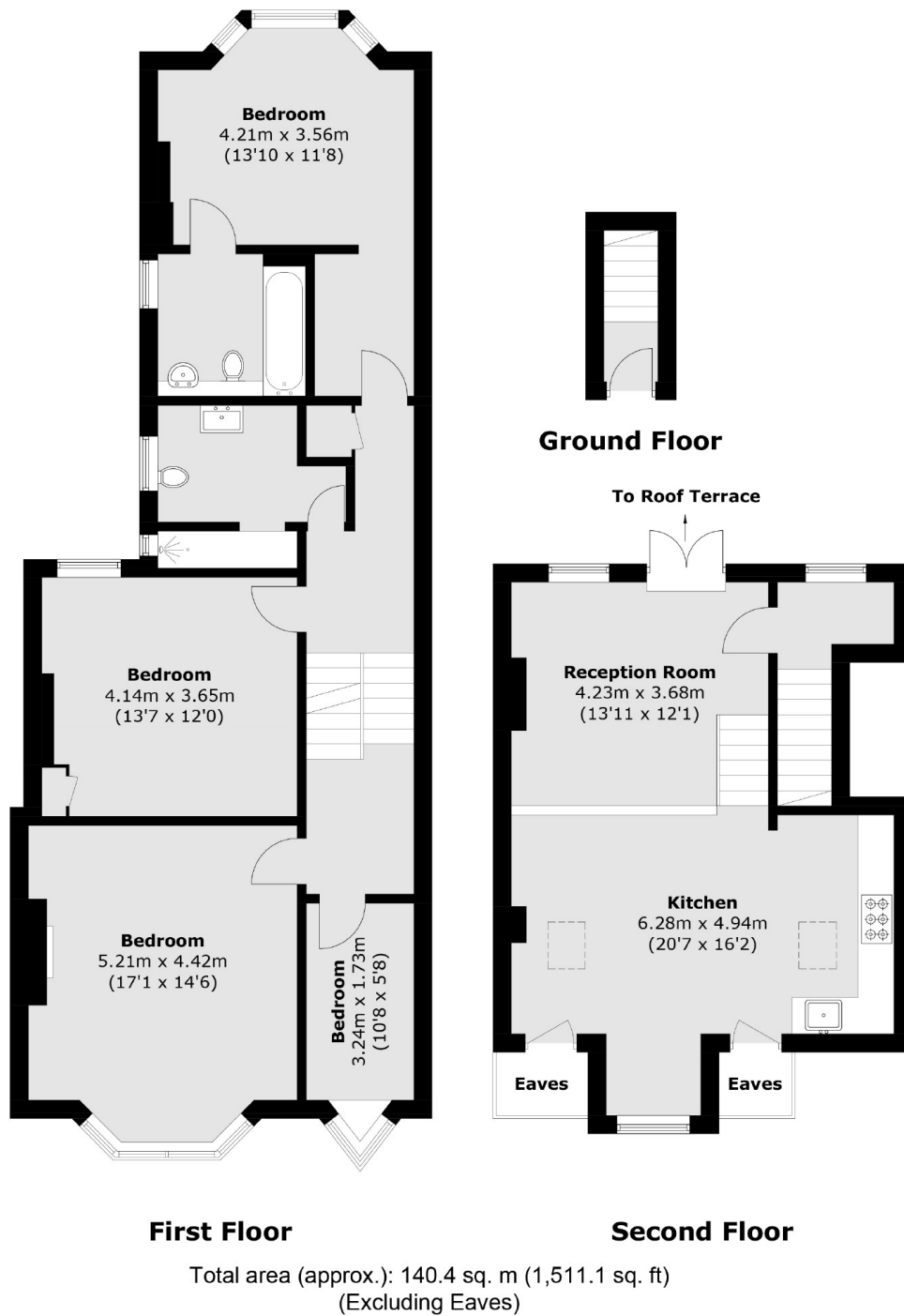
ABOUT THE HOME

A large split level, period conversion with four bedrooms, private rear garden and exceptional living space. Located in the popular ABC's ideally located for Streatham Hill, Balham and Brixton.

Wavertree Road is situated in Streatham Hill, just a short distance from the main bus station allowing access to Brixton underground station (Victoria Line) and also Streatham Hill over ground offering links to both Clapham Junction and London Victoria. Tulse Hill is also close by and offers swift services into the city via the Thameslink.







JACKSONS STREATHAM

1-3 De Montfort Parade,
Streatham High Road,
Sales: 020 8487 3179
Lettings: 020 8487 3180

Energy Rating: E We aim to make our particulars both accurate and reliable. However they are not guaranteed; nor do they form part of an offer or contract. If you require clarification on any points then please contact us, especially if you're traveling some distance to view. Please note that appliances and heating systems have not been tested and therefore no warranties can be given as to their good working order.