



LEIGHAM COURT ROAD, SW16

£1,395,000

- Semi-detached
- Six bedrooms
- Excellent condition
- Off-street parking
- Garage
- Energy rating: C

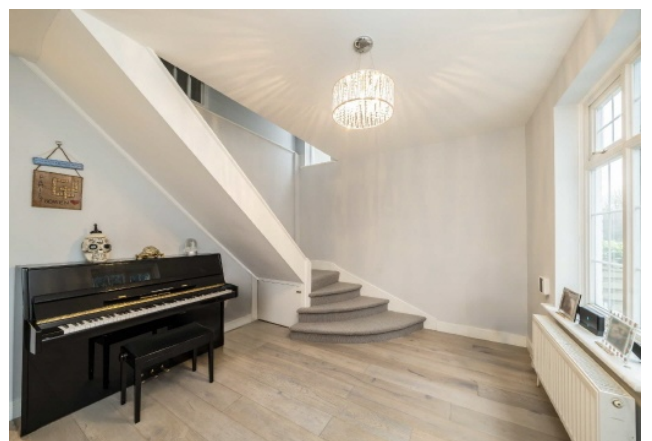




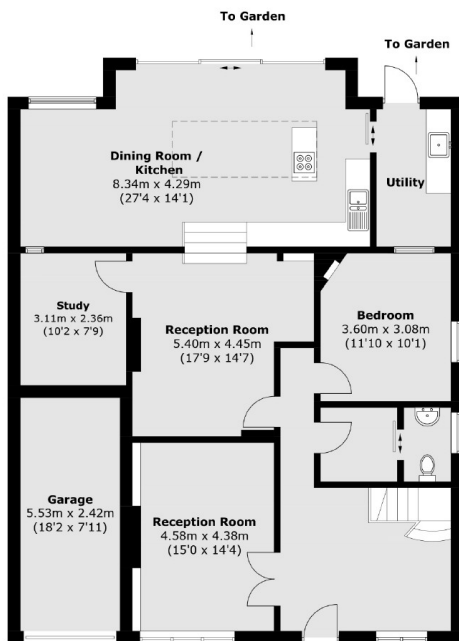
ABOUT THE HOME

A spacious six bedroom semi-detached family home with off-street parking and a large west facing garden. Offering flexible accommodation including an additional loft room and garage.

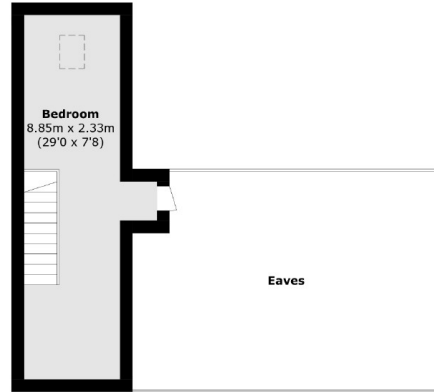
Located within close proximity to a number of outstanding schools, local amenities and transport links, including Streatham Rail, West Norwood, Streatham Hill and Streatham Common stations. Residents have easy access to Streatham Common and The Rookery in addition to a number of independent cafes, bars and restaurants.



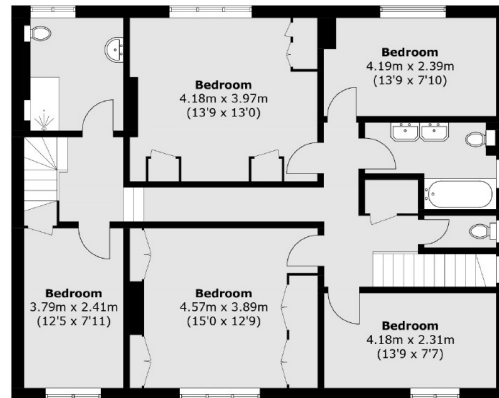




Ground Floor



Second Floor



First Floor

Approx Internal Area: 246.9 sq. m (2,657.6 sq. ft)
(Excluding Eaves)

Garage: 13.7 sq. m (147.5 sq. ft)

Total: 260.6 sq. m (2,805.1 sq. ft)

JACKSONS STREATHAM

1-3 De Montfort Parade,
Streatham High Road,
Sales: 020 8487 3179
Lettings: 020 8487 3180

Energy Rating: C We aim to make our particulars both accurate and reliable. However they are not guaranteed; nor do they form part of an offer or contract. If you require clarification on any points then please contact us, especially if you're traveling some distance to view. Please note that appliances and heating systems have not been tested and therefore no warranties can be given as to their good working order.