



STREATHAM HIGH ROAD, SW16

£395,000

- Mansion flat
- Three bedrooms
- Large square footage
- Central location
- Opposite Streatham Hill Station
- Energy rating: D





ABOUT THE HOME

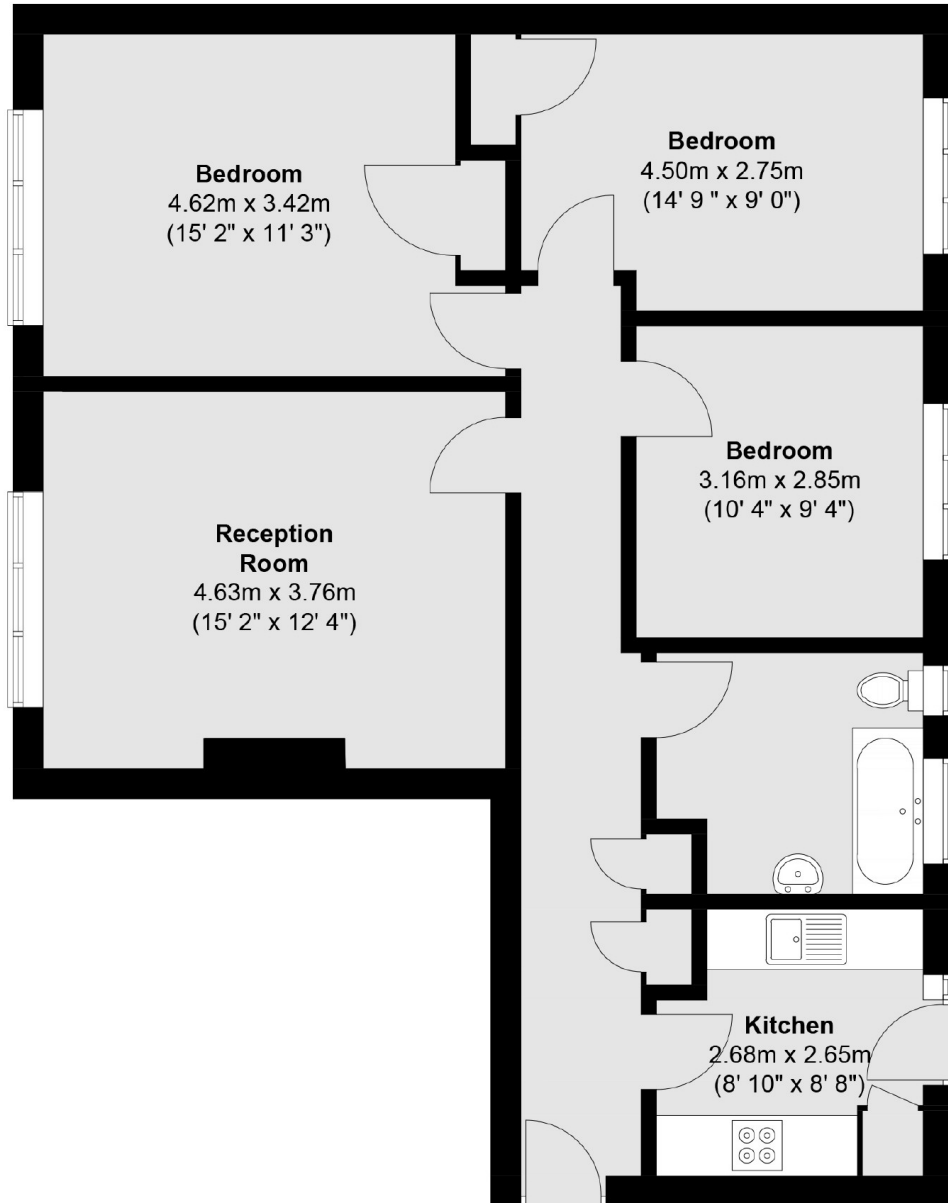
A well presented three bedroom mansion flat situated in the heart of Streatham touching distance from Streatham Hill Station.

Streatleigh Court is a popular development, set on the corner of Leigham Court Road and Streatham High Road offering easy access to both Streatham Hill Station and the local amenities.





First Floor



Total area (approx.) : 80.4 sq. m (865 sq. ft)

JACKSONS STREATHAM

1-3 De Montfort Parade,
Streatham High Road,
Sales: 020 8487 3179
Lettings: 020 8487 3180

Energy Rating: We aim to make our particulars both accurate and reliable. However they are not guaranteed; nor do they form part of an offer or contract. If you require clarification on any points then please contact us, especially if you're traveling some distance to view. Please note that appliances and heating systems have not been tested and therefore no warranties can be given as to their good working order.