



CONYERS ROAD, SW16

£495,000

- Communal garden
- Two bedrooms
- Good condition
- Second floor
- Central location
- Energy rating: D





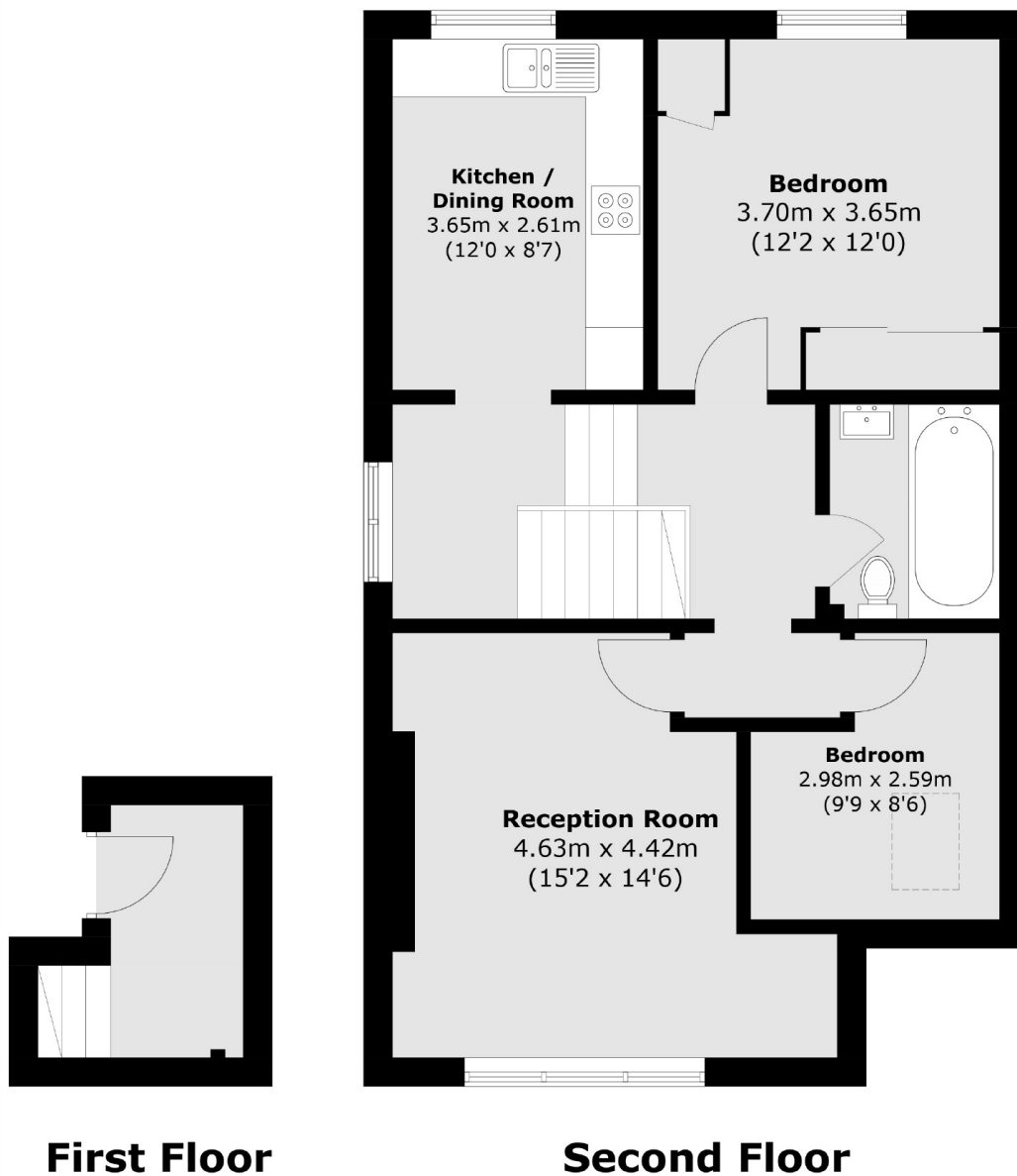
ABOUT THE HOME

A Victorian first floor flat located on a popular road in the centre of Streatham. The property has been well maintained by the current owners, the flat also has a well maintained communal garden.

Located close to Streatham and Streatham Common train stations, there are numerous services into London Bridge and London Victoria. The green expanses of Tooting Bec Common is nearby, as is central Streatham with cafés, shops, bars and restaurants.







Total area (approx.): 69.0 sq. m (742.7 sq. ft)

JACKSONS STREATHAM

1-3 De Montfort Parade,
Streatham High Road,
Sales: 020 8487 3179
Lettings: 020 8487 3180

Energy Rating: D We aim to make our particulars both accurate and reliable. However they are not guaranteed; nor do they form part of an offer or contract. If you require clarification on any points then please contact us, especially if you're traveling some distance to view. Please note that appliances and heating systems have not been tested and therefore no warranties can be given as to their good working order.