



WOODFIELD AVENUE, SW16

£695,000

- Eco Build
- Two bedrooms
- Three bathrooms
- Off-street parking
- Private garden
- Energy rating: B



2



3



1



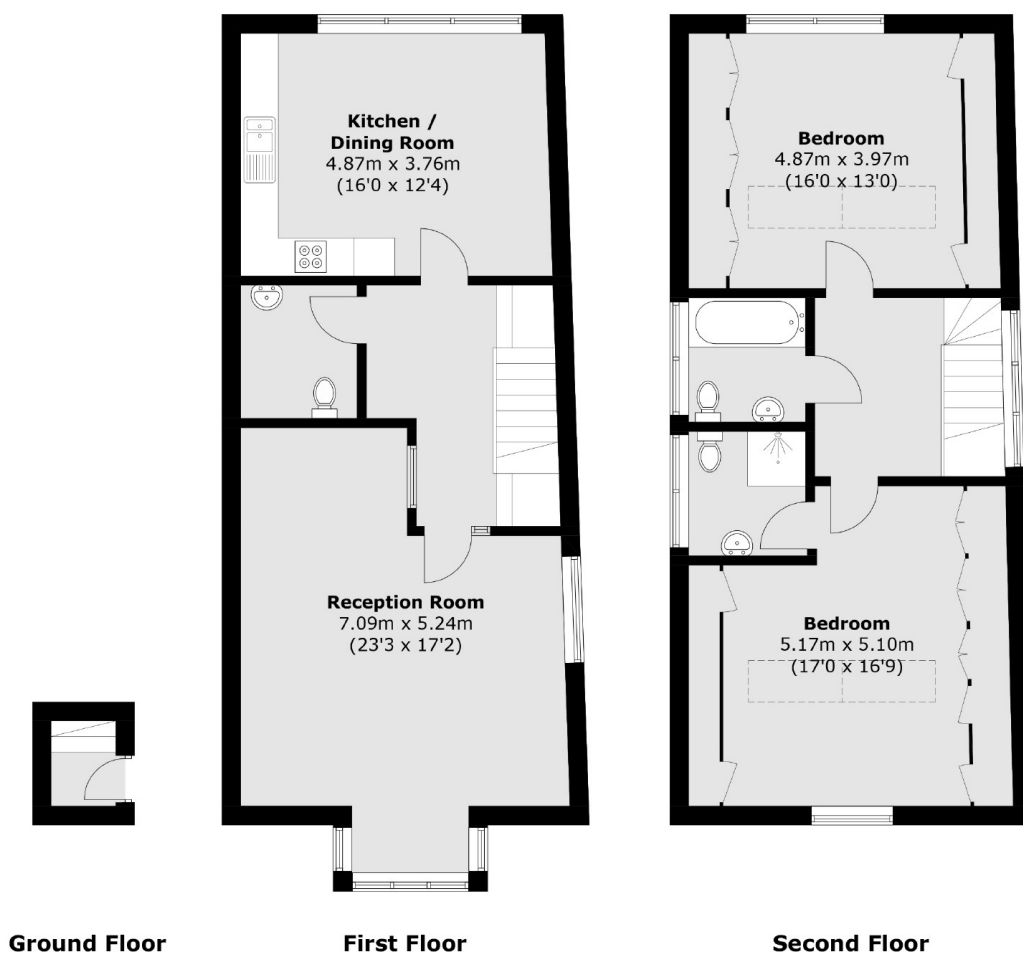
ABOUT THE HOME

A spacious split level first and second floor maisonette on a popular road in Streatham Hill. The property is an Eco Build and benefits from a private garden and is sold with no onward chain.

The property is a two minute walk to the green open spaces of Tooting Bec Common and within easy walking distance of Balham mainline and underground station. Residents have easy access to a range of amenities including a number of independent shops, bars and restaurants of both Balham and Streatham High Road.







Total area (approx.): 127.3 sq. m (1370.1 sq. ft)

JACKSONS STREATHAM

1-3 De Montfort Parade,
Streatham High Road,
Sales: 020 8487 3179
Lettings: 020 8487 3180

Energy Rating: B We aim to make our particulars both accurate and reliable. However they are not guaranteed; nor do they form part of an offer or contract. If you require clarification on any points then please contact us, especially if you're traveling some distance to view. Please note that appliances and heating systems have not been tested and therefore no warranties can be given as to their good working order.