



HEYBRIDGE AVENUE, SW16

£995,000

- Four Bedrooms
- Semi-detached
- Edwardian House
- Sough After Road
- Close to Streatham Common
- Energy rating: D





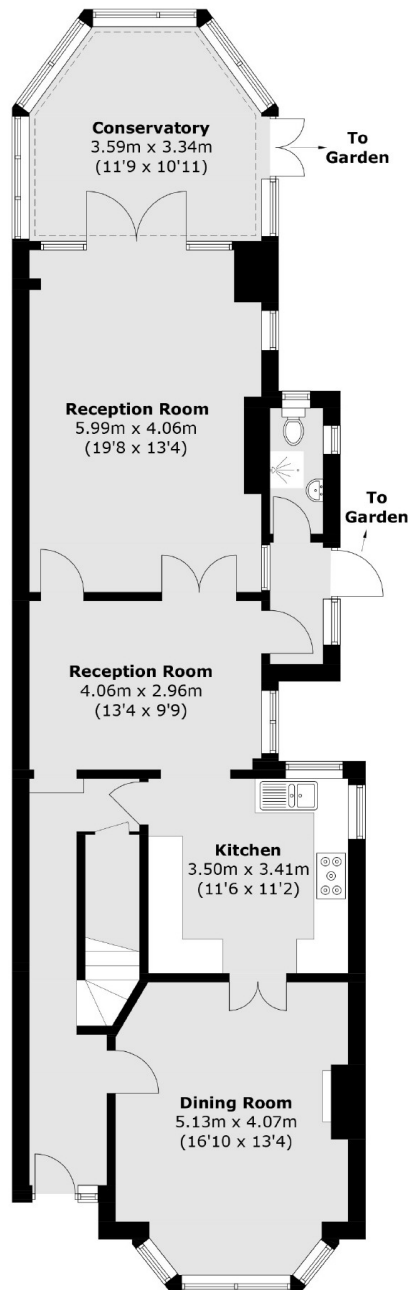
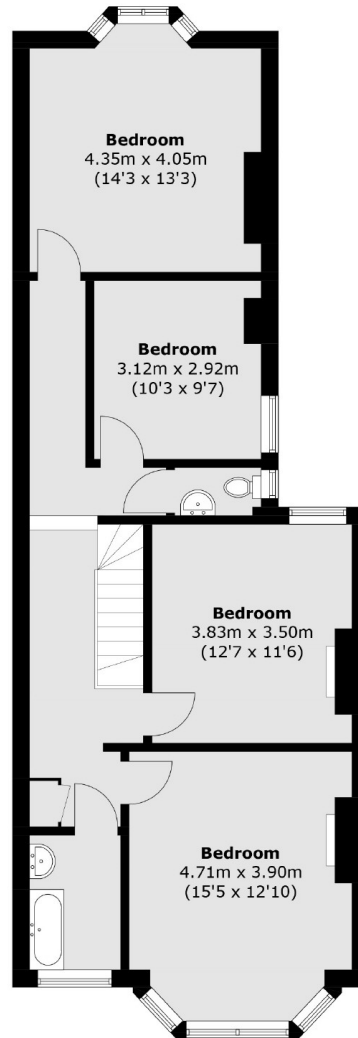
ABOUT THE HOME

A charming four bedroom Edwardian family home on one of the areas most sought after roads close to Streatham Common and the Rookery.

Situated on a sought after residential road in the heart of Streatham Common, this property is ideally located within close proximity to the social hub of Streatham High Road. These include; numerous bars, independent coffee shops, restaurants, several large supermarkets, and leisure centre. Commuters are able to access London Bridge, Blackfriars and Victoria with swift services from the two local railway stations and regular bus routes to Brixton Underground.






Ground Floor

First Floor

Total area (approx.): 182.4 sq. m (1,963.4 sq. ft)

JACKSONS STREATHAM

1-3 De Montfort Parade,
Streatham High Road,
Sales: 020 8487 3179
Lettings: 020 8487 3180

Energy Rating: D We aim to make our particulars both accurate and reliable. However they are not guaranteed; nor do they form part of an offer or contract. If you require clarification on any points then please contact us, especially if you're traveling some distance to view. Please note that appliances and heating systems have not been tested and therefore no warranties can be given as to their good working order.