



COPLEY PARK, SW16

£1,250,000

- Edwardian family home
- Corner plot
- Four bedrooms
- Three reception rooms
- West facing garden
- Energy rating : D

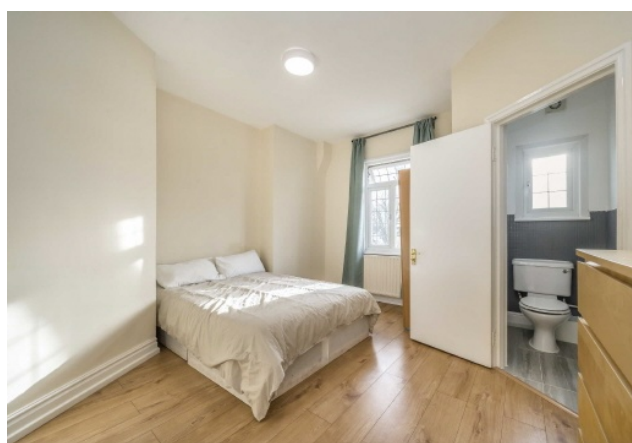




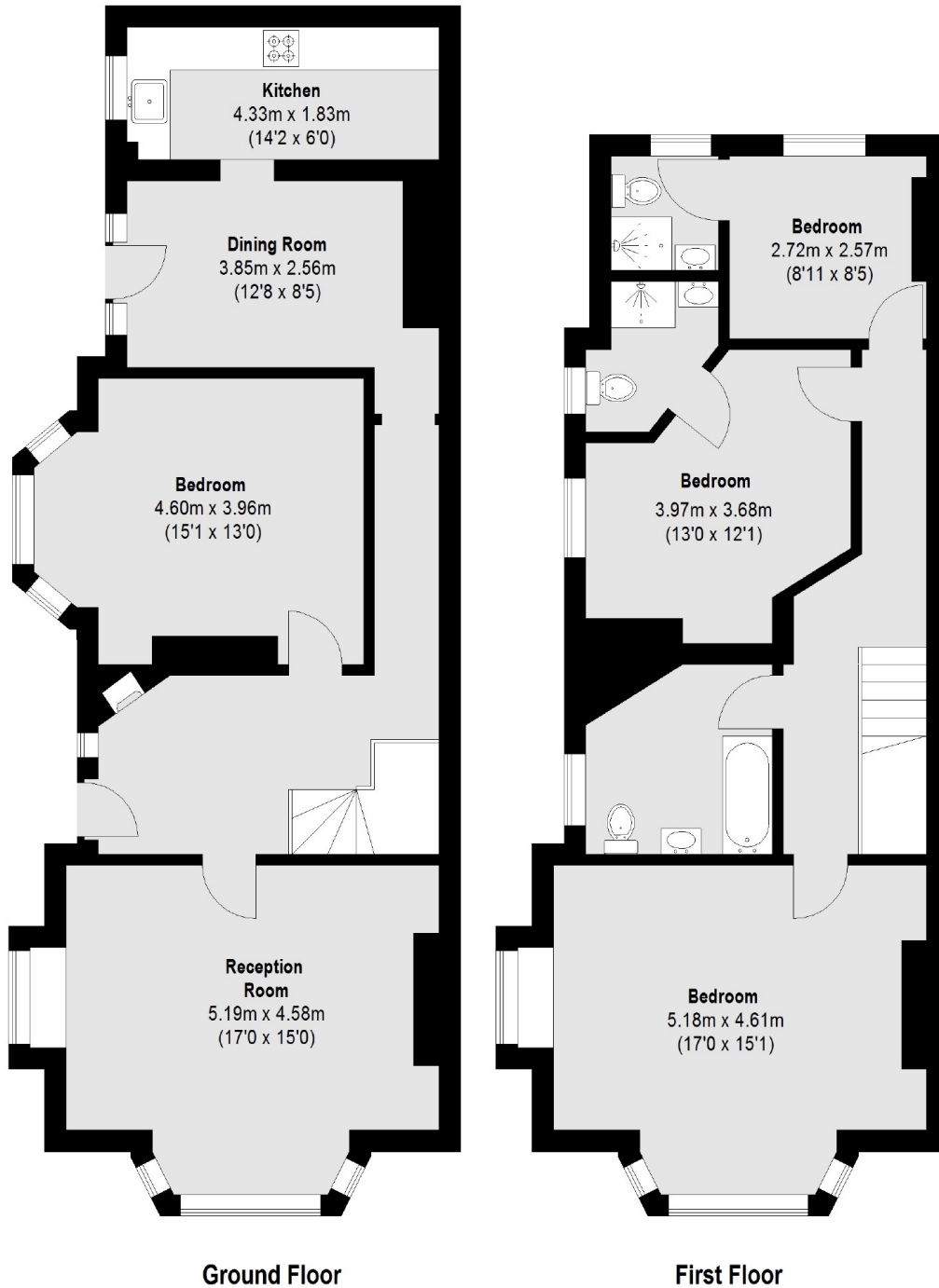
ABOUT THE HOME

A corner plot, four bedroom Edwardian family home with potential to update to ones own taste, located on a tree lined road moments from the Common.

Ideally located for access to Streatham Common, with its woodlands, Nature Reserve and Rookery gardens. Streatham Common South is within close proximity of Streatham's hub of transport connections and amenities. These include numerous bars, independent coffee shops, restaurants, large supermarkets and a leisure centre which includes a public swimming pool and ice rink. Commuters are able to access London Bridge, Blackfriars and Victoria with swift services from the three local railway stations via Thameslink. The bus links also provide services direct to Brixton tube station within a short journey of fifteen minutes.







Total area (approx.): 145.02 sq. m (1561 Sq. ft)

JACKSONS STREATHAM

1-3 De Montfort Parade,
Streatham High Road,
Sales: 020 8487 3179
Lettings: 020 8487 3180

Energy Rating: D We aim to make our particulars both accurate and reliable. However they are not guaranteed; nor do they form part of an offer or contract. If you require clarification on any points then please contact us, especially if you're traveling some distance to view. Please note that appliances and heating systems have not been tested and therefore no warranties can be given as to their good working order.