



TANKERVILLE ROAD, SW16

£495,000

- Victorian conversion flat
- Two double bedrooms
- Great condition
- Great proximity to transport
- Garden
- Energy rating: D



2



1



1



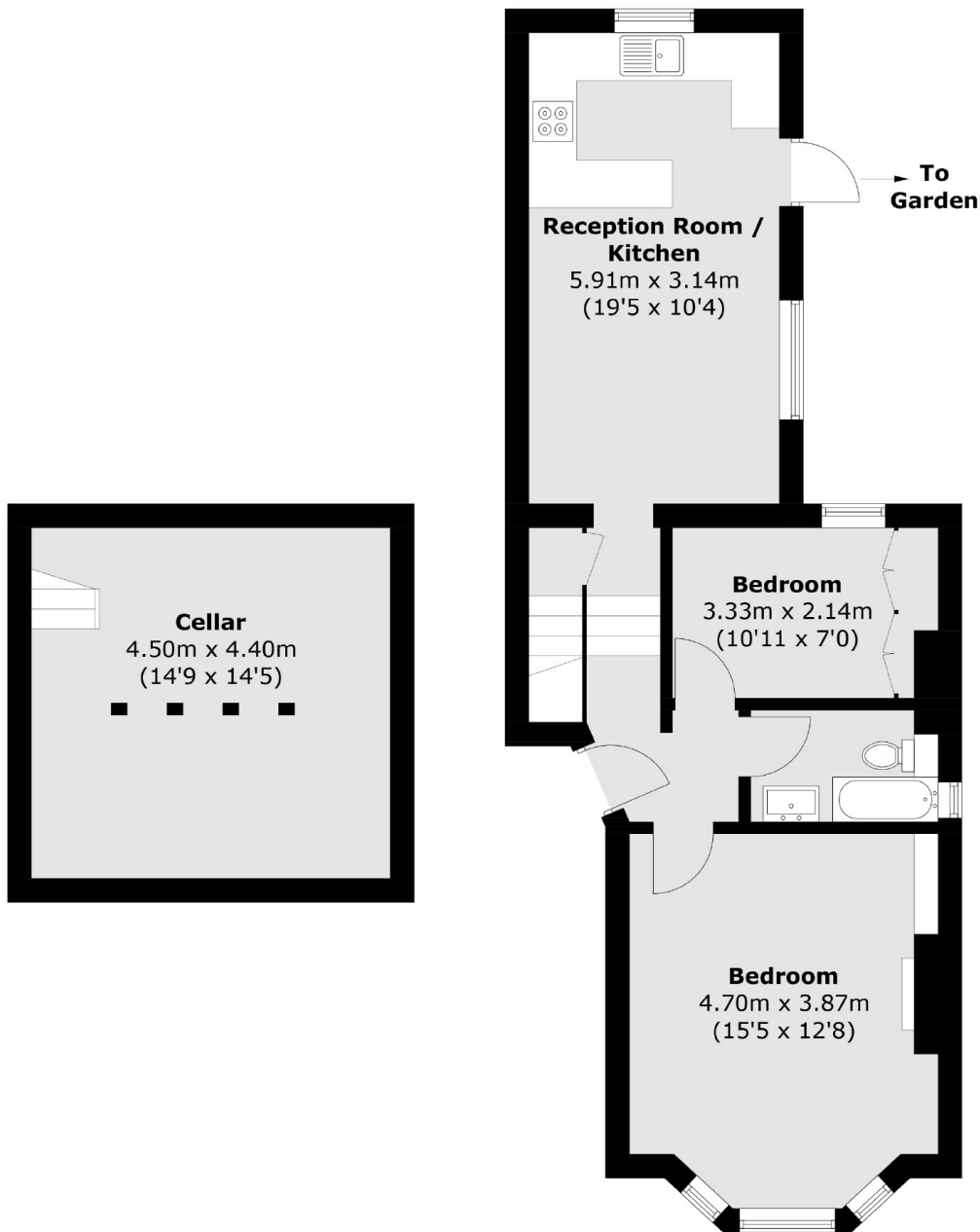
ABOUT THE HOME

A well-presented Victorian two bedroom ground floor garden flat. The property benefits from a garden and is well situated for access to multiple train stations including Streatham Common and Streatham Station with direct access into central London.

Located moments away from Streatham Common and Streatham station, this property is ideally positioned for commuters, offering quick services to the City via Southern Rail & City Thameslink lines. There are several independent pubs, cafés, restaurants and a number of outstanding schools within striking distance, as well as gyms, a leisure centre and supermarkets, including an M&S food hall.







Total area (approx.): 74.8 sq. m (805.1 sq. ft)
(Including Basement)

JACKSONS STREATHAM

1-3 De Montfort Parade,
Streatham High Road,
Sales: 020 8487 3179
Lettings: 020 8487 3180

Energy Rating: D We aim to make our particulars both accurate and reliable. However they are not guaranteed; nor do they form part of an offer or contract. If you require clarification on any points then please contact us, especially if you're traveling some distance to view. Please note that appliances and heating systems have not been tested and therefore no warranties can be given as to their good working order.