



STREATHAM COMMON SOUTH, SW16

£1,695,000

- Victorian Semi-detached
- Overlooking Common
- 2,408 Square Feet
- 100ft south facing garden
- Beautiful condition
- Energy rating: C





ABOUT THE HOME

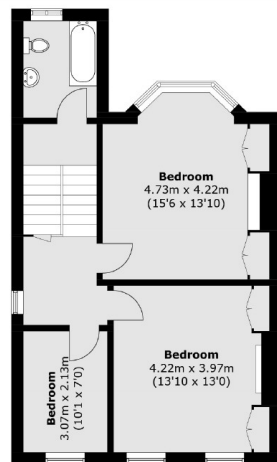
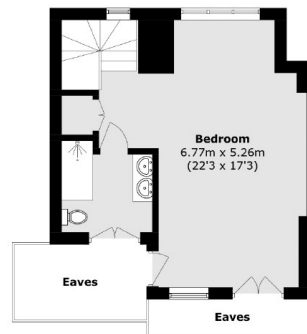
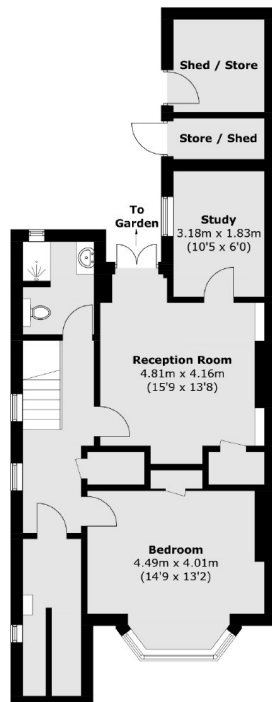
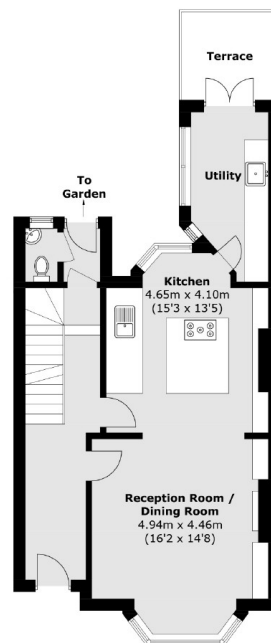
A beautiful Victorian family home, which has been refurbished and modernised to the highest of standards over looking Streatham Common.

This stunning residence offers five generously proportioned bedrooms, and is situated in a highly desirable position overlooking the open spaces of Streatham Common. Spanning 2,408 square feet, the property provides spacious accommodation throughout. The ground floor offers a beautiful kitchen diner leading out to steps down to a 100ft south facing garden. The lower ground floor has two bedrooms and an office ideal for both family living and entertaining or nannies and aupairs. On the upper floors of the house there are four elegant and well proportioned bedrooms and two bathrooms.

Streatham is a vibrant and well-connected area that offers a blend of suburban charm and cosmopolitan convenience. Known for its leafy streets and welcoming community, Streatham provides an appealing balance of tranquility and accessibility, with excellent transport links to Central London. The area boasts an array of independent cafes, eateries, and boutiques, as well as ample green spaces, including the popular Streatham Common and nearby Tooting Bec Lido. With its diverse






First Floor

Second Floor

Lower Ground Floor

Upper Ground Floor

Total area (approx.): 223.8 sq. m (2,408.8 sq. ft)

Outbuilding: 8.1 sq. m (87.2 sq. ft)

(Excluding Eaves)

Terrace: 5.5 sq. m (59.2 sq. ft)

JACKSONS STREATHAM

1-3 De Montfort Parade,
Streatham High Road,
Sales: 020 8487 3179
Lettings: 020 8487 3180

Energy Rating: C We aim to make our particulars both accurate and reliable. However they are not guaranteed; nor do they form part of an offer or contract. If you require clarification on any points then please contact us, especially if you're traveling some distance to view. Please note that appliances and heating systems have not been tested and therefore no warranties can be given as to their good working order.