



VALLEY ROAD, SW16

£425,000

- New build
- Two double bedrooms
- Two bathrooms
- Open plan living room/kitchen
- Streatham Common location
- Energy rating: B





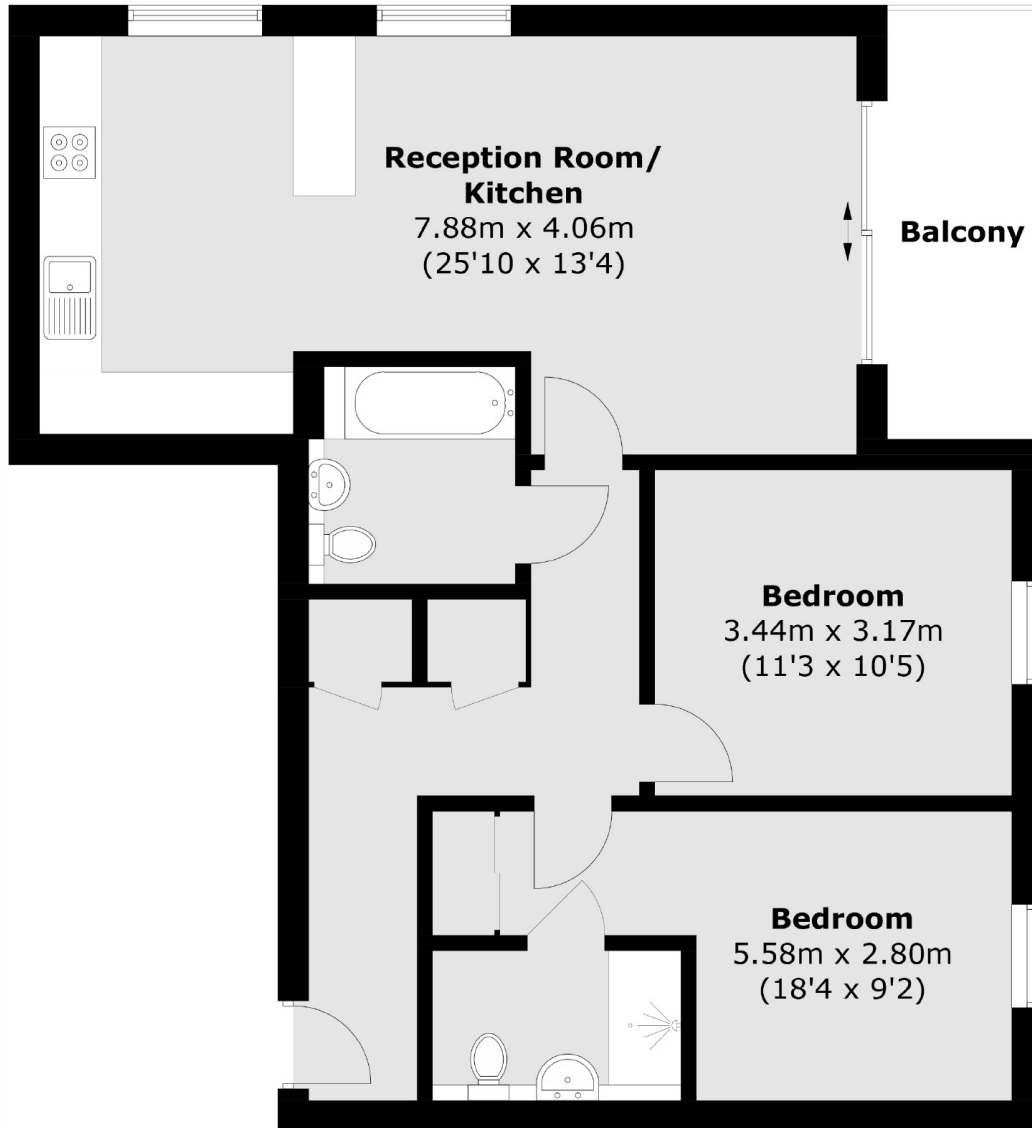
ABOUT THE HOME

A two bedroom, two bathroom flat completed to a very high standard. This property is close to Streatham Common and benefits from its excellent condition, private balcony, open plan living space and is a short walk to the Rookery Gardens.

Valley Road is well located for all the amenities of the area including: many bars, independent coffee shops, restaurants, several large supermarkets, leisure centre and health clubs. Streatham common itself has many transport links, including three train stations and numerous bus routes leading into London are close at hand.







Total area (approx.): 74 sq. m (796 sq. ft)
Balcony area (approx.): 6.0 sq. m (64.5 sq. ft)

JACKSONS STREATHAM

1-3 De Montfort Parade,
Streatham High Road,
Sales: 020 8487 3179
Lettings: 020 8487 3180

Energy Rating: B We aim to make our particulars both accurate and reliable. However they are not guaranteed; nor do they form part of an offer or contract. If you require clarification on any points then please contact us, especially if you're traveling some distance to view. Please note that appliances and heating systems have not been tested and therefore no warranties can be given as to their good working order.