



MOUNT EPHRAIM ROAD, SW16

£750,000

- Victorian Terrace Family Home
- In Need of Modernisation
- Four Bedrooms
- Potential to Extend
- Streatham Hill Location
- Close to Tooting Bec Common





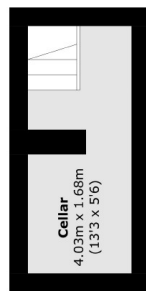
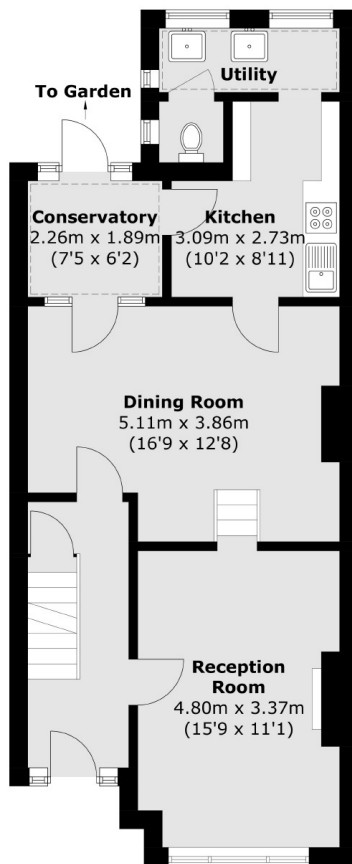
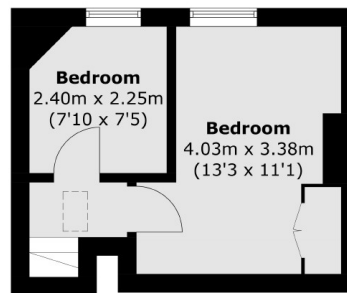
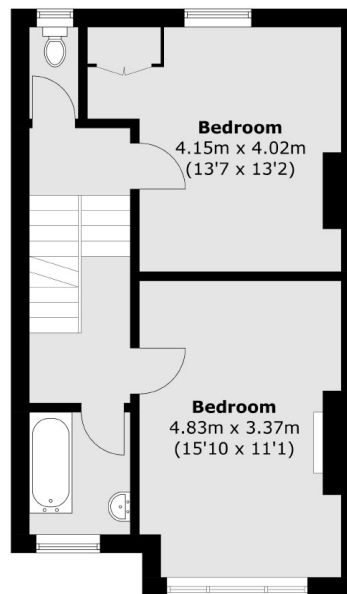
ABOUT THE HOME

A period terrace family home with extension and development potential close to Streatham High road and Tooting Bec Common.

Mount Ephraim Road is a quiet tree lined road located off Streatham High road in Streatham Hill and is one of the most favoured roads in the area. With Balham and Streatham in close proximity there are a variety of restaurants, bars, leisure facilities and cafés. Local schools include, Henry Cavendish, Broomwood Hall and Streatham & Clapham High School. Local transport links include Balham underground station for the Northern Line, Streatham Hill for railway services to London Victoria via Clapham Junction and the Thameslink via Streatham.






Basement

Ground Floor

Second Floor

First Floor

Total area (approx.): 132.0 sq. m (1,420.8 sq. ft)

JACKSONS STREATHAM

1-3 De Montfort Parade,
Streatham High Road,
Sales: 020 8487 3179
Lettings: 020 8487 3180

Energy Rating: D We aim to make our particulars both accurate and reliable. However they are not guaranteed; nor do they form part of an offer or contract. If you require clarification on any points then please contact us, especially if you're traveling some distance to view. Please note that appliances and heating systems have not been tested and therefore no warranties can be given as to their good working order.