



Deerhurst Road, SW16

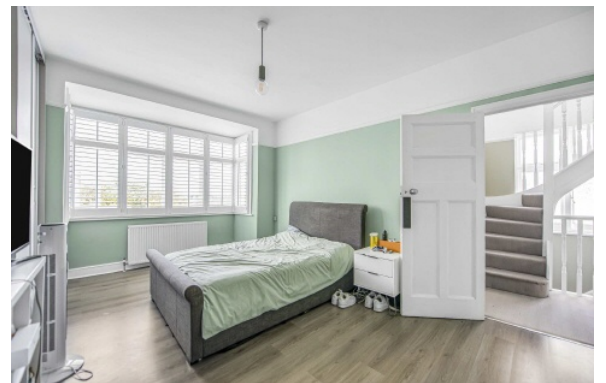
£995,000

A recently extended, Semi-Detached family home in great condition on the corner of Streatham Common and the Rookery Gardens.

- Fully Extended Family Home
- Semi-Detached Corner Property
- Four Bedrooms
- Three Bathrooms
- Garage
- Common Side Location



Deerhurst Road is a very popular residential road predominantly made up of family homes located within close proximity to a number of outstanding schools, local amenities and transport links, including Streatham Rail, Streatham Common and Streatham Hill stations, with West Norwood rail station being just marginally further. Residents have easy access to Streatham Common and The Rookery in addition to a number of independent cafes, bars and restaurants. Valleyfield Road also offers eye opening panoramic views of the city.







Total area (approx.) : 176.7 sq. m (1902 sq. ft)
 Total garage area (approx.) : 12.5 sq. m (134 sq. ft)
 (Excluding Eaves)

Jacksons Streatham
 1-3 De Montfort Parade
 Streatham High Road
 Streatham
 London
 SW16 1BU

Energy Rating: C We aim to make our particulars both accurate and reliable. However they are not guaranteed; nor do they form part of an offer or contract. If you require clarification on any points then please contact us, especially if you're traveling some distance to view. Please note that appliances and heating systems have not been tested and therefore no warranties can be given as to their good working order.