



STREATHAM HILL, SW2

£375,000

- Top floor flat
- 1930s mansion flat
- Bright reception
- Two double bedrooms
- Communal gardens
- Energy rating: E





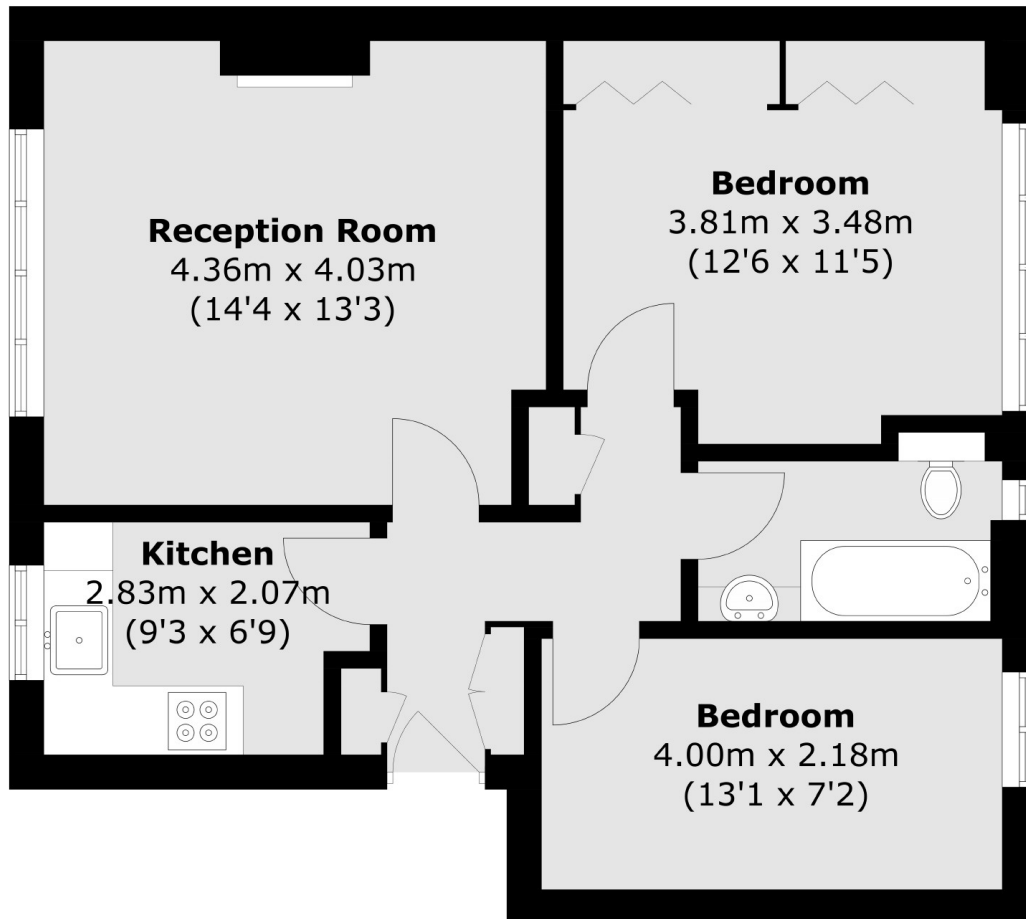
ABOUT THE HOME

This two bedroom apartment enjoys well kept communal gardens, set in the highly sought after 1930s development situated on Streatham Hill. Offering bright accommodation throughout the property enjoys a spacious reception room, fitted kitchen, two double bedrooms, modern bathroom/WC and ample storage space.

Wavertree Court is conveniently positioned in the heart of Streatham Hill near local bars, restaurants, shops and excellent transport links. Streatham Hill mainline station provides rail links to London Victoria via Clapham Junction station. The numerous bus routes also offer efficient transport links into Central London and Victoria Line Brixton.







Total area (approx.): 56.4 sq. m (607.0 sq. ft)

JACKSONS STREATHAM

1-3 De Montfort Parade,
Streatham High Road,
Sales: 020 8487 3179
Lettings: 020 8487 3180

Energy Rating: We aim to make our particulars both accurate and reliable. However they are not guaranteed; nor do they form part of an offer or contract. If you require clarification on any points then please contact us, especially if you're traveling some distance to view. Please note that appliances and heating systems have not been tested and therefore no warranties can be given as to their good working order.