



GLENELDON ROAD, SW16

£425,000

- Victorian conversion flat
- One bedroom
- Private garden
- Share of freehold
- Popular central location
- Energy rating: D





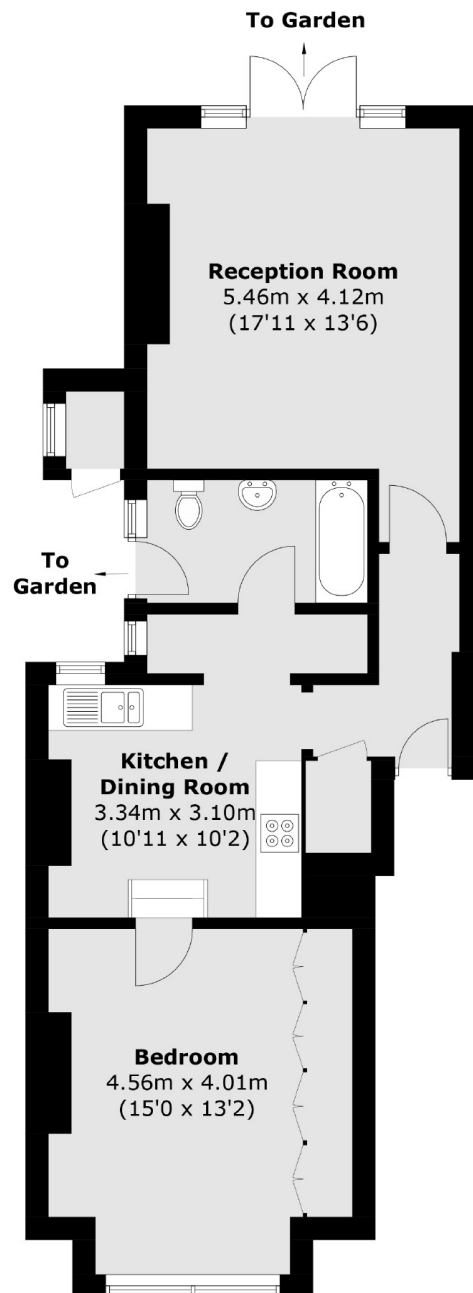
## ABOUT THE HOME

A well proportioned, period conversion garden flat on a popular road close to Streatham station and Tooting Bec Common. The flat is in great condition and is being sold with a share of the freehold.

Gleneldon is well located for all the amenities of the area including many bars, independent coffee shops, restaurants, several large supermarkets, leisure centre and health clubs. Streatham Common itself and multiple transport links including three train stations and numerous bus routes leading into London are close at hand.







Total area (approx.): 61.8 sq. m (665.2 sq. ft)  
External Store : 0.8 sq. m (8.6 sq. ft)

### JACKSONS STREATHAM

1-3 De Montfort Parade,  
Streatham High Road,  
Sales: 020 8487 3179  
Lettings: 020 8487 3180

Energy Rating: D We aim to make our particulars both accurate and reliable. However they are not guaranteed; nor do they form part of an offer or contract. If you require clarification on any points then please contact us, especially if you're traveling some distance to view. Please note that appliances and heating systems have not been tested and therefore no warranties can be given as to their good working order.