



WOODMANSTERNE ROAD, SW16

£695,000

- Terraced Family Home
- Three Bedrooms
- Double Fronted
- Excellent Condition
- Close To Streatham Common
- Energy Rating: D





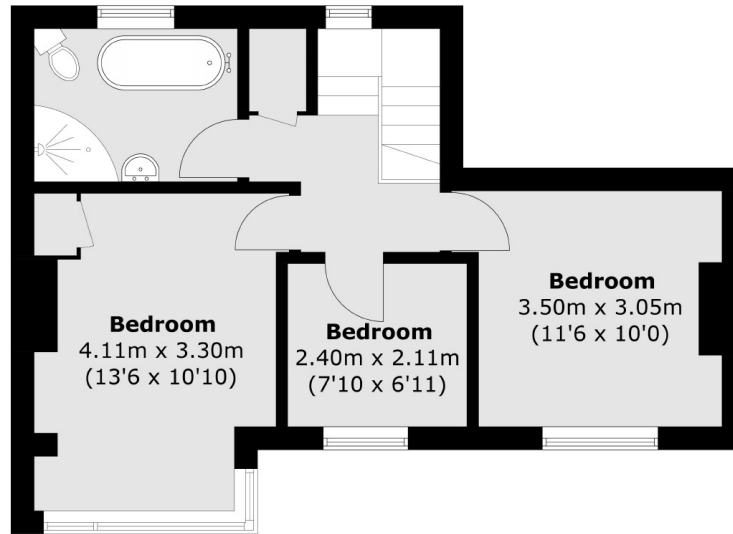
ABOUT THE HOME

A double fronted family house on a popular road in Streatham Vale. The property is in excellent condition and features a large kitchen/dining area alongside a separate reception.

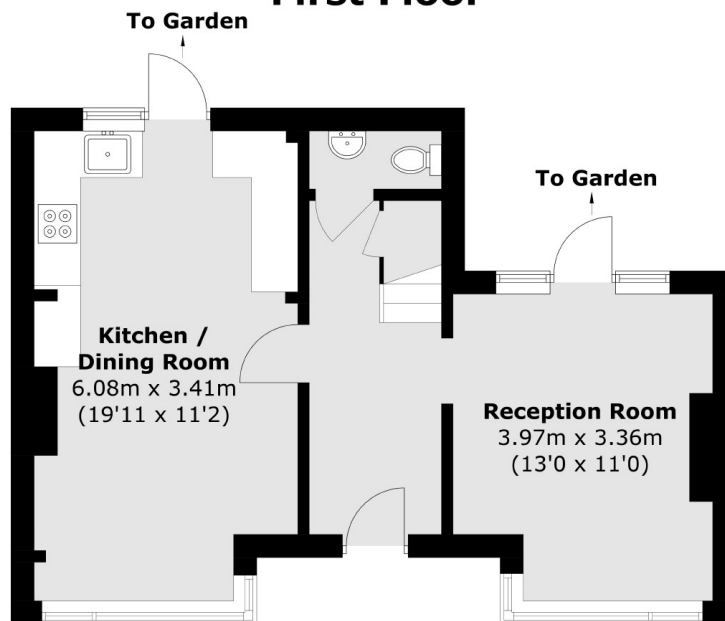
Woodmansterne Road is very conveniently placed at the northern end of Streatham Vale affording easy access to Streatham Common station. Being close to the green open spaces of Streatham common and within easy walking distance of Greyhound lane with its developing mini high street. Commuters can access bus routes into Brixton and beyond from Streatham High Road and swift connections to London Victoria via Clapham Junction from Streatham common station.







First Floor



Ground Floor

Total area (approx.): 84.1 sq. m (905.2 sq. ft)

JACKSONS STREATHAM

1-3 De Montfort Parade,
 Streatham High Road,
 Sales: 020 8487 3179
 Lettings: 020 8487 3180

Energy Rating: D We aim to make our particulars both accurate and reliable. However they are not guaranteed; nor do they form part of an offer or contract. If you require clarification on any points then please contact us, especially if you're traveling some distance to view. Please note that appliances and heating systems have not been tested and therefore no warranties can be given as to their good working order.