



CRIFFEL AVENUE, SW2

£375,000

- Victorian Conversion
- One Double Bedroom
- Large Shared Garden
- Share of Freehold
- Telford Park Conservation Area
- Energy Rating: C





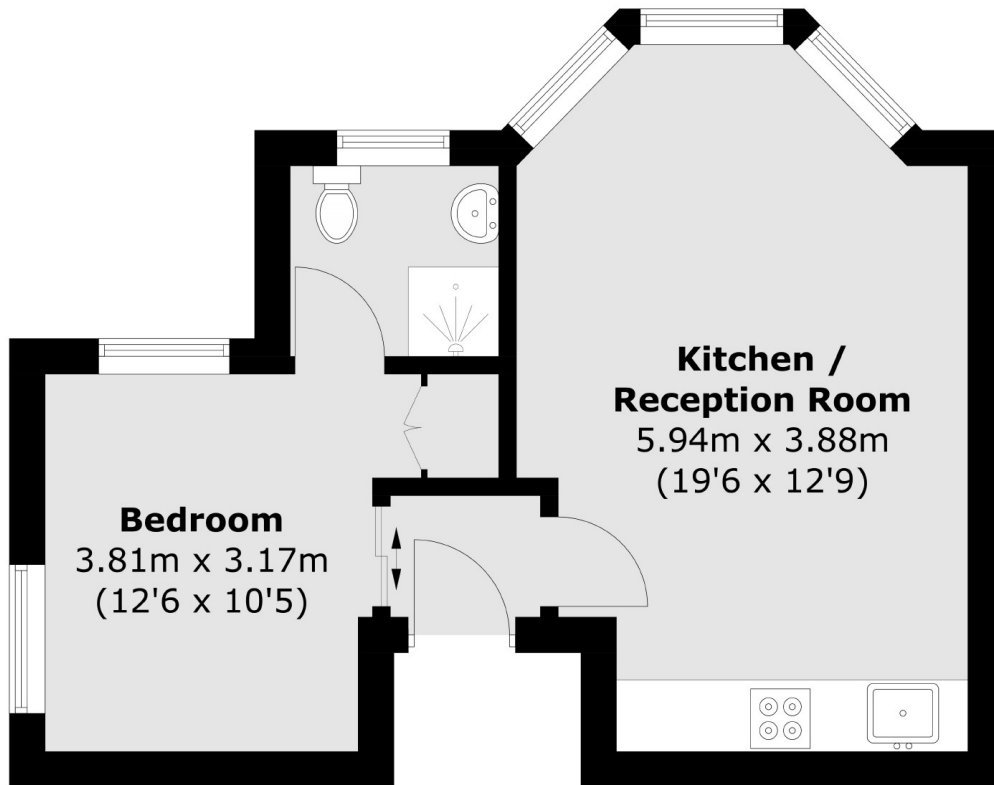
ABOUT THE HOME

Situated in the Telford Park conservation area, this first floor flat comprises one double bedroom, a modern kitchen/living room, a stylish bathroom and a large shared garden. The property is finished to an immaculate standard throughout and also benefits from having a share of the freehold.

Located on Criffel Avenue, this property is well positioned for easy access into Balham and close to all of the shops, bars and restaurants local to the area. Balham mainline and underground stations are within close proximity as is Streatham Hill mainline station. There are excellent bus routes providing access to Brixton for the Victoria line. Also, the green open spaces of Tooting Bec Common are just minutes away.







Total area (approx.): 34.5 sq. m (371.3 sq. ft)

JACKSONS STREATHAM

1-3 De Montfort Parade,
Streatham High Road,
Sales: 020 8487 3179
Lettings: 020 8487 3180

Energy Rating: C We aim to make our particulars both accurate and reliable. However they are not guaranteed; nor do they form part of an offer or contract. If you require clarification on any points then please contact us, especially if you're traveling some distance to view. Please note that appliances and heating systems have not been tested and therefore no warranties can be given as to their good working order.