



RYDAL ROAD, SW16

£575,000

- Two double bedrooms
- Victorian conversion
- Share of freehold
- Excellent condition
- Excellent transport links
- Energy rating: D





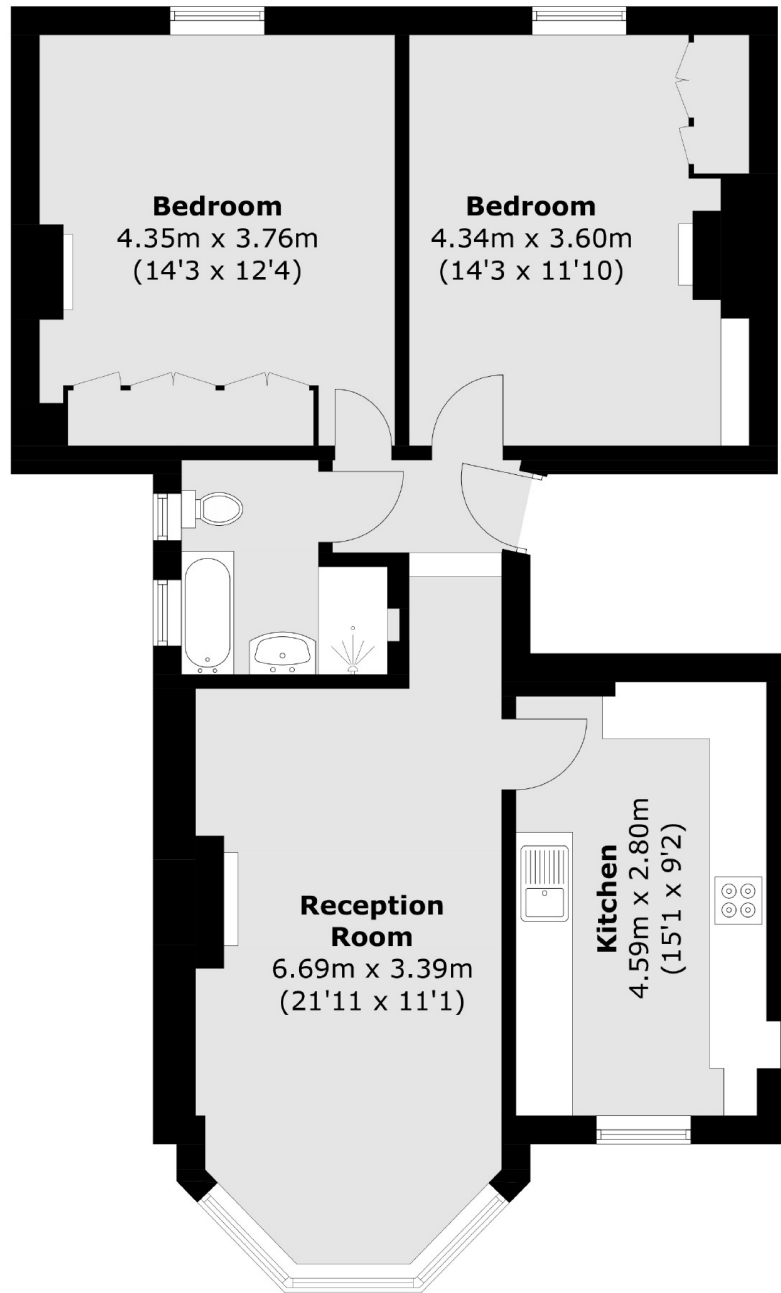
## ABOUT THE HOME

A large well-presented two double bedroom Victorian conversion in excellent condition located off of Tooting Bec Common. The property has retained the original Victorian features, and has high quality fixtures and fittings throughout, including brand new kitchen and bathroom. The property benefits from natural lighting throughout.

Rydal Road is positioned off of Tooting Bec Common and is very close to the Lido. Local amenities in Streatham are in abundance and include both independent and high street retailers such as London Smoke & Cure and M&S, fitness and leisure facilities such as Element Fitness, Yoga Edge and Virgin Active. There are also numerous cafés, restaurants, bars and pubs. Transport into London Bridge and Blackfriars is very convenient with Thameslink services from Streatham. The northern line is also very easily accessible from Tooting Bec or Balham which are located around the common.







Total area (approx.): 73.2 sq. m (787.9 sq. ft)

### JACKSONS STREATHAM

1-3 De Montfort Parade,  
Streatham High Road,  
Sales: 020 8487 3179  
Lettings: 020 8487 3180

Energy Rating: D We aim to make our particulars both accurate and reliable. However they are not guaranteed; nor do they form part of an offer or contract. If you require clarification on any points then please contact us, especially if you're traveling some distance to view. Please note that appliances and heating systems have not been tested and therefore no warranties can be given as to their good working order.