



BECKMEAD AVENUE, SW16

£575,000

- Victorian conversion
- Two double bedrooms
- Private roof terrace
- Off-street parking
- Close by Tooting Bec Common
- Energy rating: C

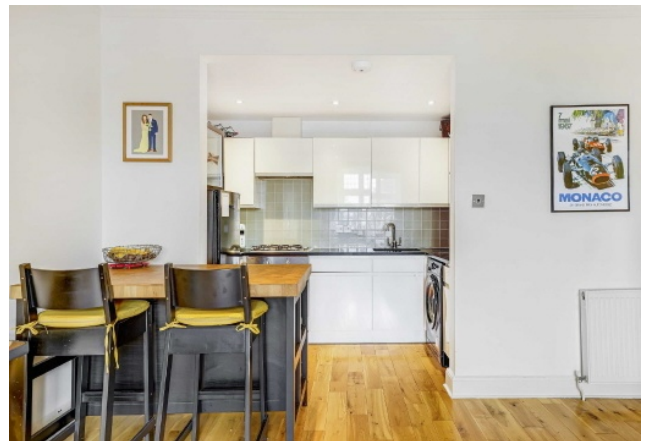




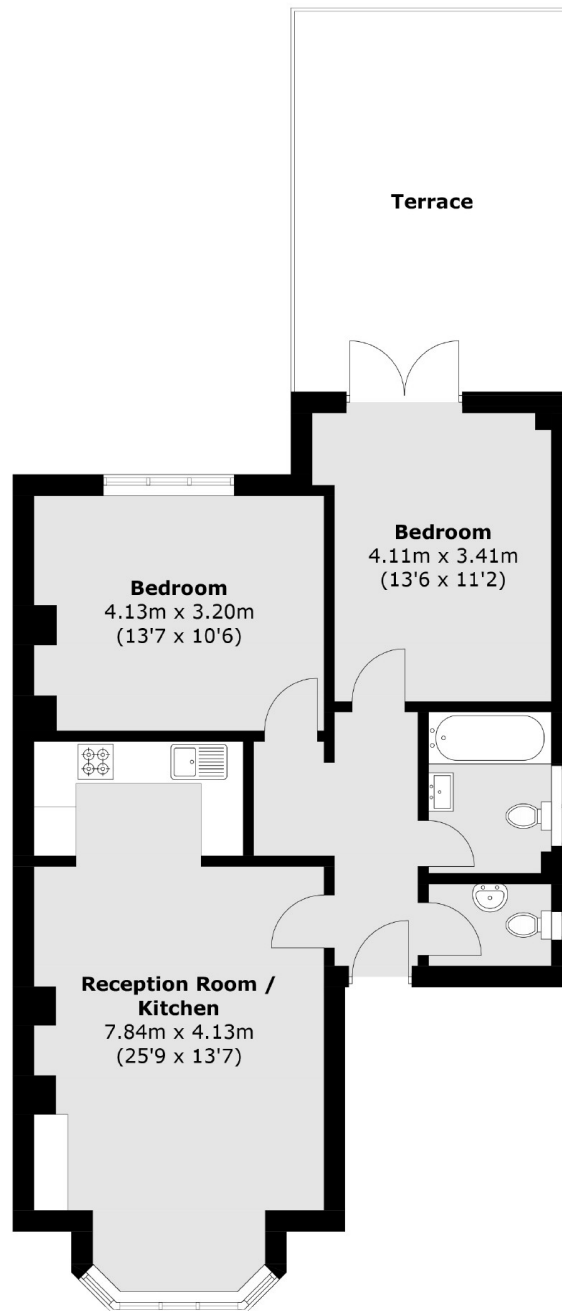
ABOUT THE HOME

A well presented, two double bedroom, first floor flat which benefits from a large private roof terrace.

Becmead Avenue is one of Streatham's most sought after roads being quiet, tree lined and close to the amenities of Streatham's ever improving high road. The house is ideally situated only a short distance to both Broomwood Hall Preparatory and Streatham and Clapham High school. The green expanse of Tooting Common is also close by. Local amenities include; gymnasiums, Odeon cinema and the Hub Development inclusive of shopping and leisure facilities. There are excellent transport links with numerous bus routes to Brixton Underground (Victoria Line) and mainline stations both with links into the City. Streatham Hill mainline will take commuters through Balham (Northern Line), Clapham Junction and onto London Victoria, while Streatham mainline station offer Thameslink services.







Total area (approx.): 70.8 sq. m (762.1 sq. ft)
Terrace: 21.2 sq. m (228.2 sq. ft)

JACKSONS STREATHAM

1-3 De Montfort Parade,
Streatham High Road,
Sales: 020 8487 3179
Lettings: 020 8487 3180

Energy Rating: We aim to make our particulars both accurate and reliable. However they are not guaranteed; nor do they form part of an offer or contract. If you require clarification on any points then please contact us, especially if you're traveling some distance to view. Please note that appliances and heating systems have not been tested and therefore no warranties can be given as to their good working order.