



VALLEY ROAD, SW16

£525,000

- Victorian conversion
- One bedroom
- Leasehold
- Large East facing garden
- Close to Streatham Common
- Energy rating: D





## ABOUT THE HOME

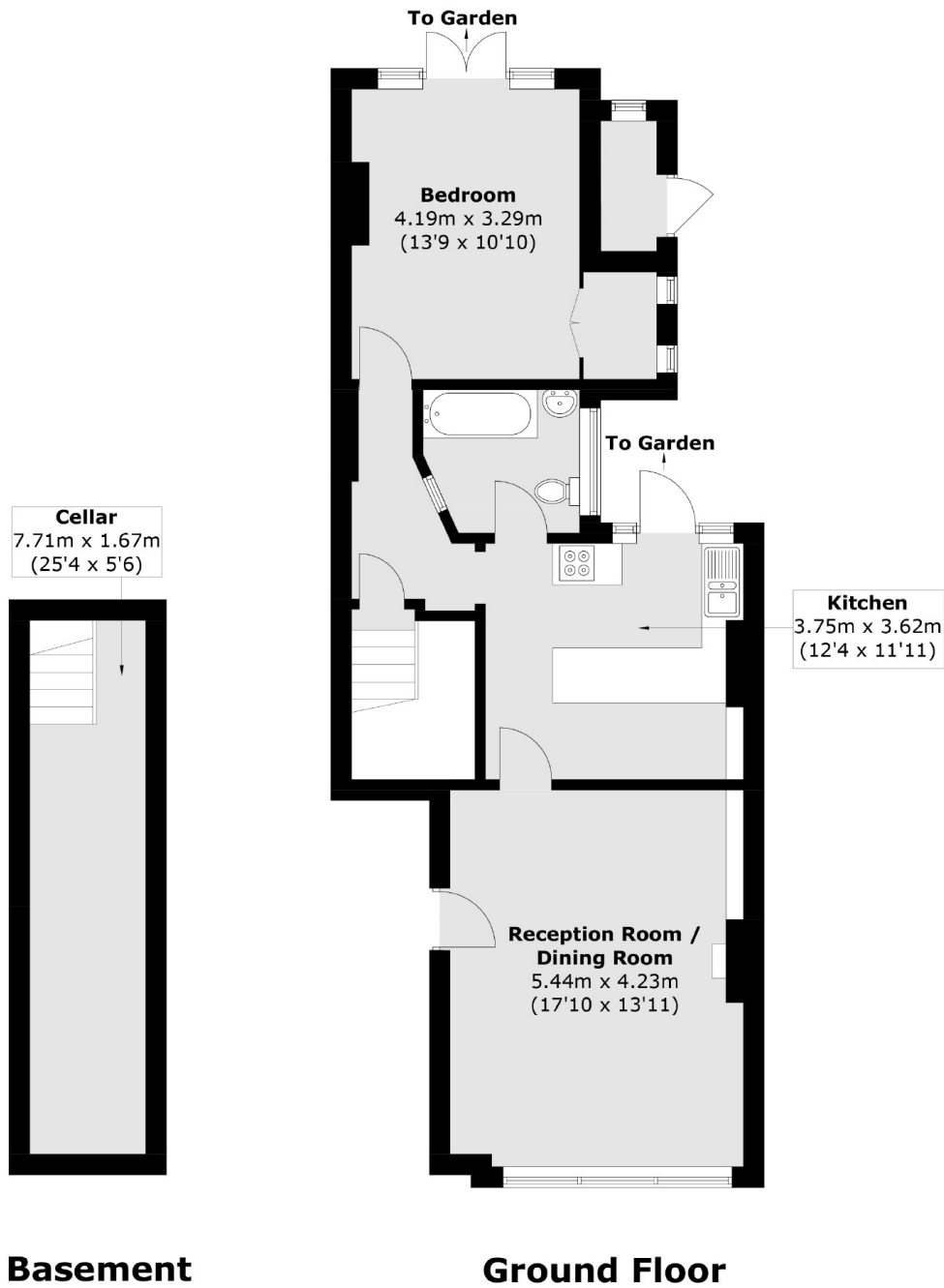
A beautifully presented, larger than average one double bedroom ground floor flat with a beautiful mature garden, located moments to Streatham Common.

Ideal for any first time buyer, this charming flat is full of natural light, and boasts period features. The spacious reception/dining area is located to the front of the building with wooden flooring and feature fire place. The eat in kitchen follows which has plenty of room for storage and which offers direct access into the garden. After passing the recently refurbished bathroom, you will enter the large bedroom which has views, as well as access to the garden. The flat also offers a cellar ideal for further storage.

Valley Road is well located for all the amenities of the area including: many bars, independent coffee shops, restaurants, several large supermarkets, leisure centre and health clubs. Streatham Common itself and multiple transport links including three train stations and numerous bus routes leading into London are close at hand.







Total area (approx.): 79.3 sq. m (853.6 sq. ft)  
External Store : 1.6 sq. m (17.2 sq. ft)

### JACKSONS STREATHAM

1-3 De Montfort Parade,  
Streatham High Road,  
Sales: 020 8487 3179  
Lettings: 020 8487 3180

Energy Rating: D We aim to make our particulars both accurate and reliable. However they are not guaranteed; nor do they form part of an offer or contract. If you require clarification on any points then please contact us, especially if you're traveling some distance to view. Please note that appliances and heating systems have not been tested and therefore no warranties can be given as to their good working order.