



Woodfield Avenue, SW16

£4,000 PCM

Detached corner plot, five double bedroom family home on beautiful residential road in Streatham Hill with benefits such as, a large garden, garage, potential to rear extend and is nearby Tooting Common.

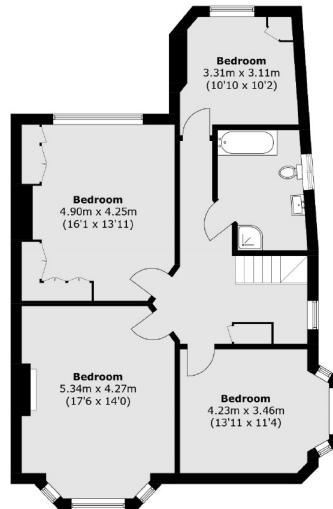
- Detached Corner Plot
- Five Double Bedrooms
- Large Garden
- Streatham Hill
- Furnished
- Close to Tooting Common

For further information on the costs associated with renting a property, please pop into our office or visit our website.

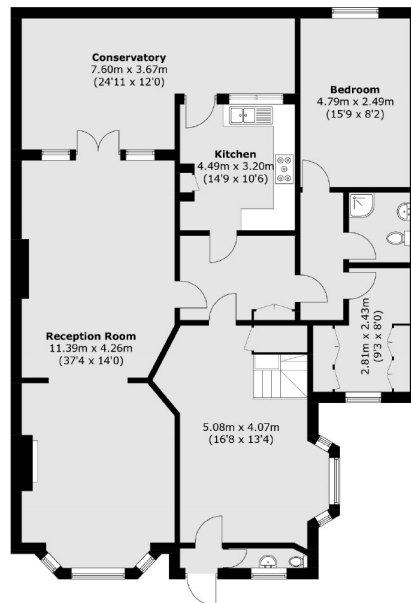


The property is a two minute walk to the green open spaces of Tooting Bec Common and within easy walking distance of Balham mainline and underground station. There are several well regarded schools in the area, including Streatham and Clapham High, Northwood Senior & Henry Cavendish Primary School. Dulwich College is a short 10 minute drive away, with Dulwich foundation coaches serving DPL, Jags & Alleyn's.





First Floor



Ground Floor

Total area (approx.): 240.3 sq. m (2,586.6 sq. ft)

Jacksons Streatham
 1-3 De Montfort Parade
 Streatham High Road
 Streatham
 London
 SW16 1BU

Energy Rating: We aim to make our particulars both accurate and reliable. However they are not guaranteed; nor do they form part of an offer or contract. If you require clarification on any points then please contact us, especially if you're traveling some distance to view. Please note that appliances and heating systems have not been tested and therefore no warranties can be given as to their good working order.