



## ANGLES ROAD, SW16

£795,000

- Semi-detached period home
- Four double bedrooms
- Large south facing garden
- Lots of scope to extend
- Great/convenient location
- Energy rating: tbc





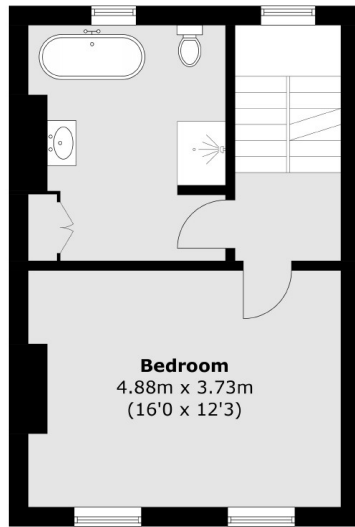
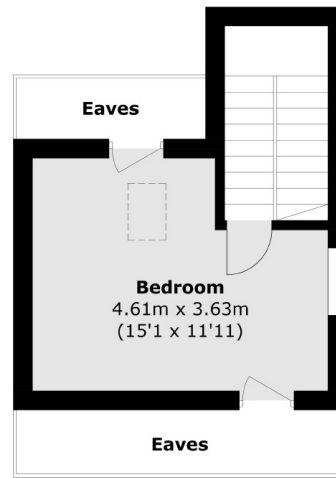
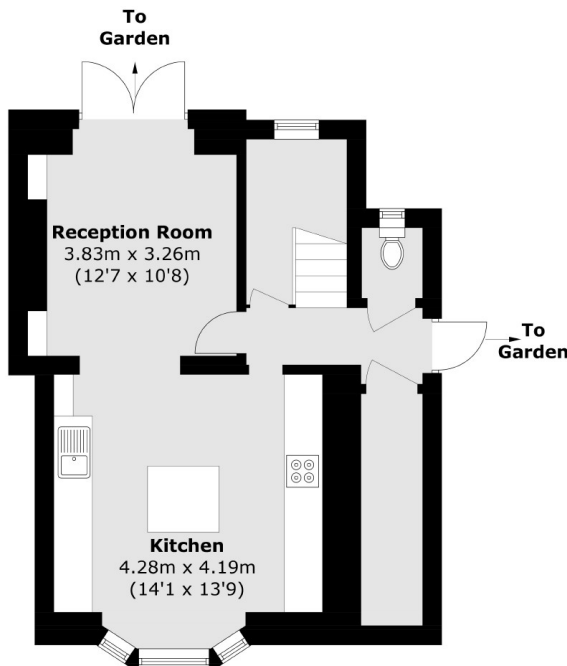
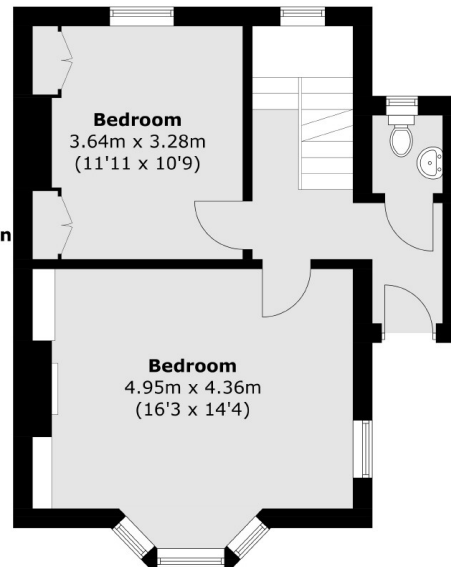
## ABOUT THE HOME

A charming semi-detached Victorian family home situated on a quiet residential road in the heart of Streatham. The house has lot of potential to extend and add value and features a very large south facing garden.

Angles Road is very quiet side road in Streatham within close proximity to the high roads coffee shops, retailers, bars, restaurants and pubs. Transport to London Victoria and Clapham Junction via Streatham Hill station and London Bridge via Thames Link from Streatham, both of which are close by.






**First Floor**

**Second Floor**

**Lower Ground Floor**

**Ground Floor**

Total area (approx.): 144.7 sq. m (1,557.5 sq. ft)  
(Excluding Eaves)

**JACKSONS STREATHAM**

1-3 De Montfort Parade,  
Streatham High Road,  
Sales: 020 8487 3179  
Lettings: 020 8487 3180

Energy Rating: We aim to make our particulars both accurate and reliable. However they are not guaranteed; nor do they form part of an offer or contract. If you require clarification on any points then please contact us, especially if you're traveling some distance to view. Please note that appliances and heating systems have not been tested and therefore no warranties can be given as to their good working order.