



Sunnyhill Road, SW16

£2,550 PCM

An ideal property for three professional sharers, this spacious split level conversion flat comprises a good sized reception room, separate modern fitted kitchen, three good sized double bedrooms and two bathrooms.

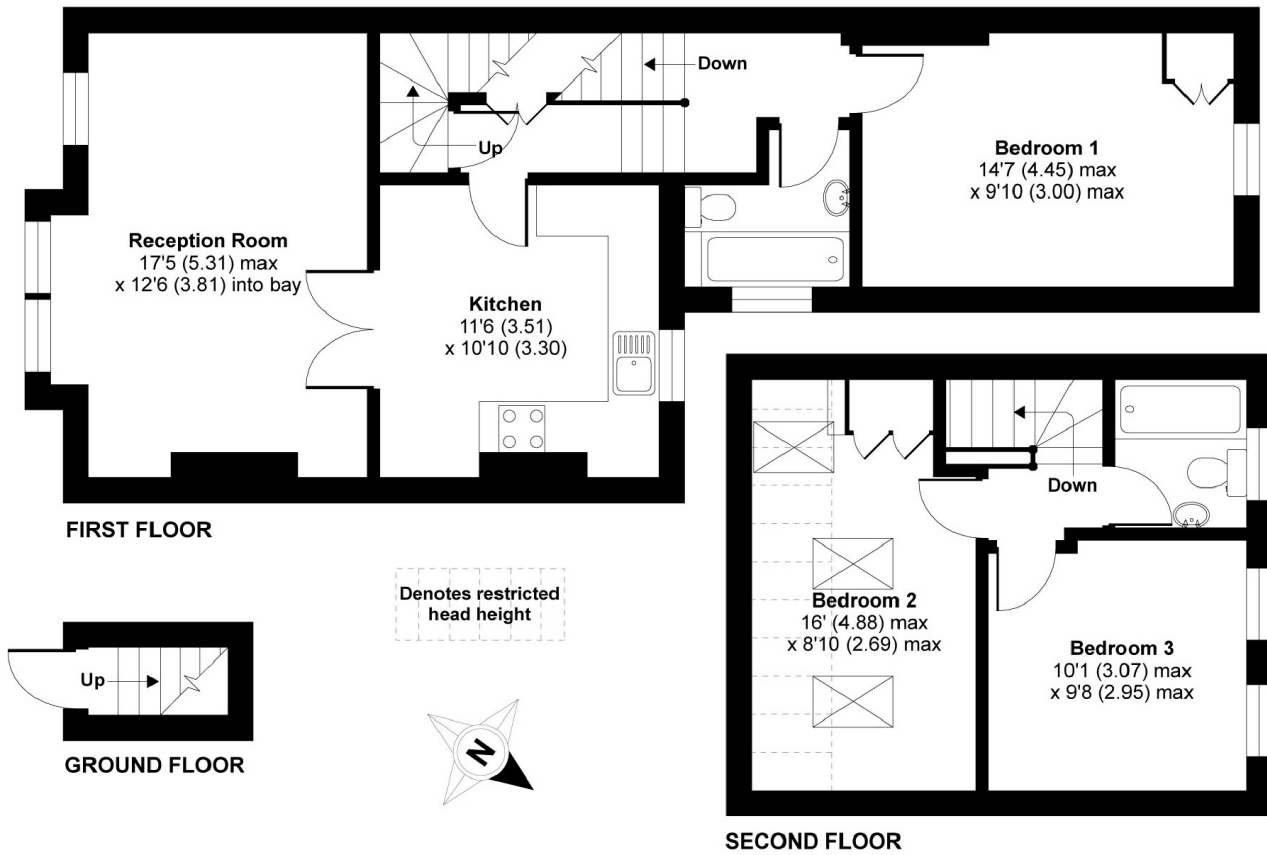
- Split Level Conversion Flat
- Modern Fitted Kitchen
- Three Double Bedrooms
- Two Bathrooms
- Ideal For Three Sharers
- Furnished

For further information on the costs associated with renting a property, please pop into our office or visit our website.



Sunnyhill Road is conveniently located close to the local shops and amenities along Streatham High Road and within easy reach of both Streatham and Streatham Hill train stations.





APPROX. GROSS INTERNAL FLOOR AREA 908 SQ FT 84.3 SQ METRES (EXCLUDES RESTRICTED HEAD HEIGHT)

Sunnyhill Road, London, SW16

Copyright nichecom.co.uk 2015 Produced for Jacksons the Independent Estate Agents REF : 35770

Jacksons Streatham
1-3 De Montfort Parade
Streatham High Road
Streatham
London
SW16 1BU

Energy Rating: C We aim to make our particulars both accurate and reliable. However they are not guaranteed; nor do they form part of an offer or contract. If you require clarification on any points then please contact us, especially if you're traveling some distance to view. Please note that appliances and heating systems have not been tested and therefore no warranties can be given as to their good working order.