



ABBOTSWOOD ROAD, SW16

£2,100,000

- Semi-detached family home
- Off-street parking
- Four double bedrooms
- Beautifully landscaped garden
- Opposite Tooting Bec Common
- Excellent school catchment





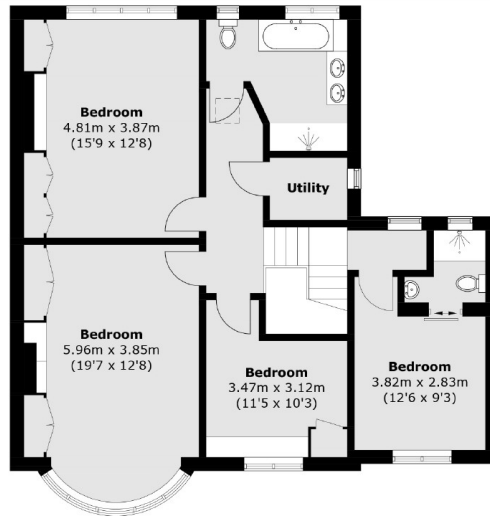
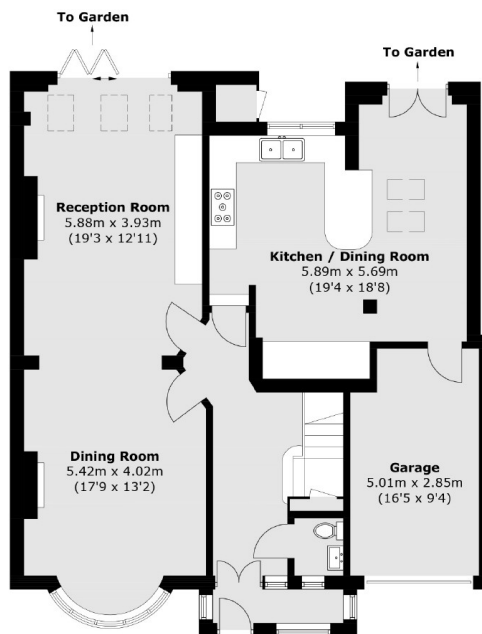
ABOUT THE HOME

A very well-presented four bedroom semi-detached family home with off-street parking and a well landscaped garden. Situated in a desirable location, just moments away from Tooting Bec Common and other Ofsted outstanding schools.

Abbotswood Road is located just off Drewstead road bordering Balham. Streatham Hill mainline, Balham mainline and Balham underground stations are all close by as is Tooting Bec Common. Residents have access to a range of amenities, including excellent schools and independent coffee shops, pubs, bars and restaurants in Balham and Streatham Hill.






First Floor

Ground Floor

Total area (approx.): 193.6 sq. m (2,083.9 sq. ft)
 External Cupboard: 0.7 sq. m (7.5 sq. ft)

JACKSONS STREATHAM

1-3 De Montfort Parade,
 Streatham High Road,
 Sales: 020 8487 3179
 Lettings: 020 8487 3180

Energy Rating: C We aim to make our particulars both accurate and reliable. However they are not guaranteed; nor do they form part of an offer or contract. If you require clarification on any points then please contact us, especially if you're traveling some distance to view. Please note that appliances and heating systems have not been tested and therefore no warranties can be given as to their good working order.