



ABERCAIRN ROAD, SW16

£725,000

- Freehold
- Four bedrooms
- Beautiful private garden
- Immaculate condition
- Open-plan living space
- Energy rating: D





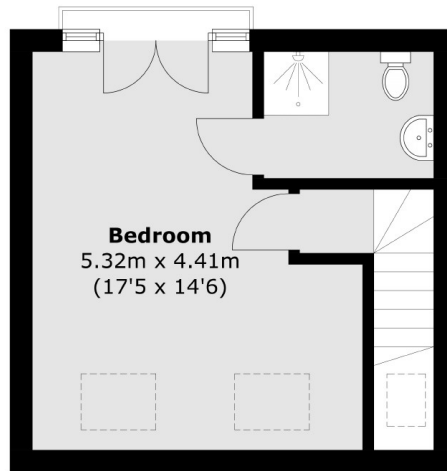
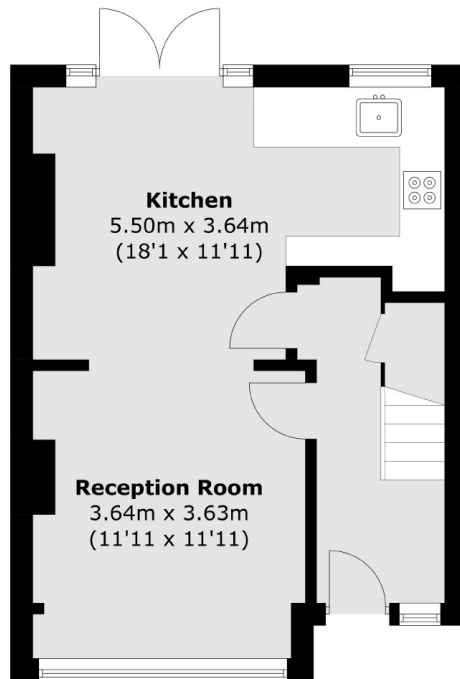
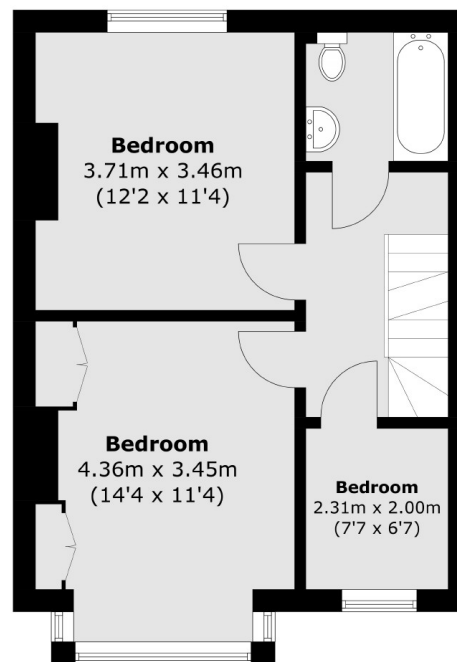
## ABOUT THE HOME

A four bedroom family home with a landscaped garden, located close to transport links and sought after schools. This beautiful home has been tastefully decorated throughout and is full of natural light. The ground accommodates a spacious double reception room with a beautiful semi open plan kitchen/dining area to the rear. Double doors lead out into the private West facing garden. The first floor boasts two large double bedrooms, with a further bedroom/study and a beautifully decorated family bathroom. The top floor offers a superb master bedroom with its own en suite shower room, and a Juliette balcony looking out into the garden.

Abercairn is very conveniently placed at the northern end of Streatham Vale affording easy access to Streatham Common station. Being close to the green open spaces of Streatham common and within easy walking distance of Greyhound lane with its developing mini high street. Commuters can access bus routes into Brixton and beyond from Streatham High Road and swift connections from Streatham common station to London Victoria & London Bridge. You are also walking distance away from Streatham Station offering Thameslink services.





**Second Floor****Ground Floor****First Floor**

Total area (approx.): 112.2 sq. m (1,207.7 sq. ft)

**JACKSONS STREATHAM**

1-3 De Montfort Parade,  
Streatham High Road,  
Sales: 020 8487 3179  
Lettings: 020 8487 3180

Energy Rating: D We aim to make our particulars both accurate and reliable. However they are not guaranteed; nor do they form part of an offer or contract. If you require clarification on any points then please contact us, especially if you're traveling some distance to view. Please note that appliances and heating systems have not been tested and therefore no warranties can be given as to their good working order.