

WELCOME TO
LEWIN ROAD, SW16

An attractive Victorian family home that has been modernised throughout whilst retaining period features including original fireplaces and cornices, stained glass windows and tiled flooring.

The bright entrance hall to the house is welcoming with a solid hardwood teak floor which continues throughout the ground floor. The drawing room is a sea of calm and an ideal place to display paintings and statement furniture. There is a real flame fire set in a modern stone fireplace and a beautiful chandelier which is surrounded by original cornices and plaster. A feature wall with Phillip Jeffries designed beautiful silk wallpaper. The dining room is traditional with feature silk wallpaper, a Phillip Jeffries design paper, with French doors opening into the garden views and original features. The kitchen is a modern black and white Nolte style with generous cupboard space. A breakfast seating area provides views of the garden, whilst there is a good size cellar ready for wine storage or development into additional space, or downstairs bathroom. The cellar has unusually good headroom for conversion.

There are six bedrooms, with two used as a TV room and an office. Each room has been tastefully decorated: The garden room, gold room and pink room. The master bedroom has a separate dressing room and a display alcove with back lights. There are two modern tiled bathrooms incorporating both a bath and shower. A cinema room or TV snug can be found on the top floor - this space is perfect for long winter evenings. The laundry room can also be found on the top floor and there is a large office/library with plenty of shelving space. Furthermore, there is a separate dining room and a formal drawing room with a modernised kitchen.





Outside, the home has two off street parking spaces, the perfect spot for installing an EV charging point. The front garden has double gates and is a delight in spring when the camellias bloom. At the top of the garden are four seating areas and a pond with Carp and Ironwork seating which is accessed via a pergola archway of Jasmine and Roses. The garden has outdoor lighting, perfect for enjoying summer evenings and an irrigation system which keeps it green. The main garden is entered through the bi-fold French doors to the kitchen.

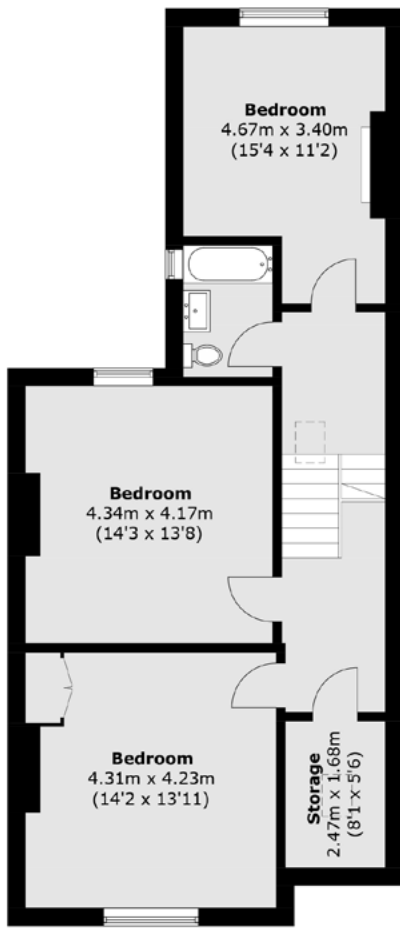
Lewin Road is a popular tree lined road in Streatham Common, with characterful homes and a well connected railway network with both Streatham and Streatham Common stations within 10 minutes walk. Streatham Common itself is two minutes away, providing a large open space, woods, formal gardens, playground, tennis court and cafe at the Rookery.

HOME FEATURES

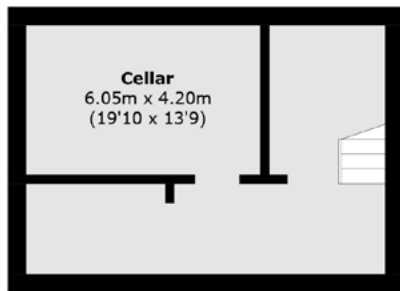
- Victorian home
- Semi-detached
- Six bedrooms
- Excellent condition
- Off-street parking
- South facing garden



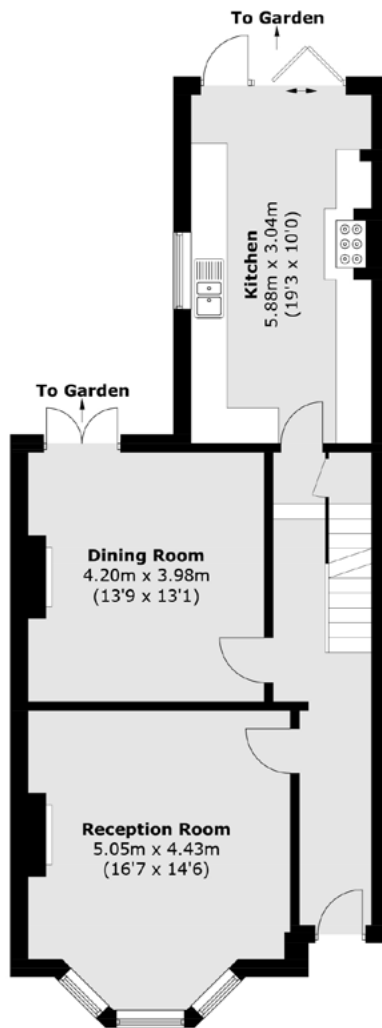
LEWIN ROAD STREATHAM, SW16



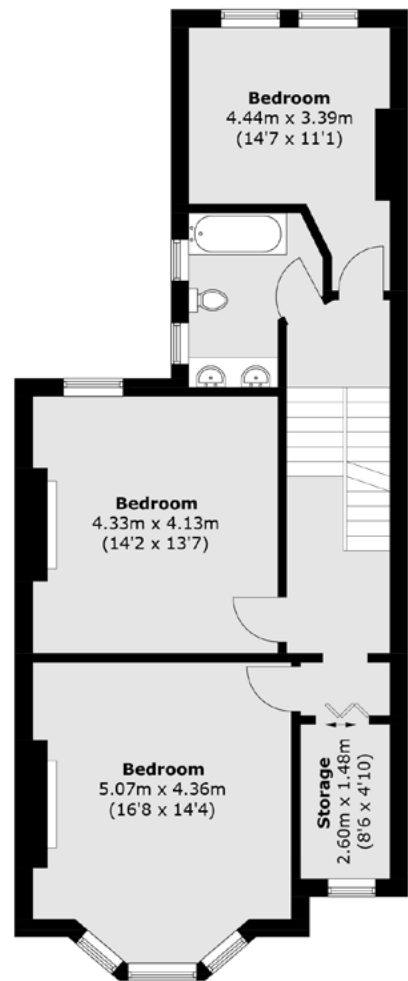
Second Floor



Lower Ground Floor



Ground Floor



First Floor

TOTAL APPROX. FLOOR AREA 2,605.9 SQ. FT. (242.1 SQ. M)

Energy Rating: D. We aim to make our particulars both accurate and reliable. However they are not guaranteed; nor do they form part of an offer or contract. If you require clarification on any points then please contact us, especially if you're traveling some distance to view. Please note that appliances and heating systems have not been tested and therefore no warranties can be given as to their good working order.

JACKSONS STREATHAM

020 8487 3179