



PALACE ROAD, SW2

£695,000

- Period garden conversion flat
- Two double bedrooms
- Share of freehold
- Off street parking
- 1058sqft and large garden
- Energy rating: D





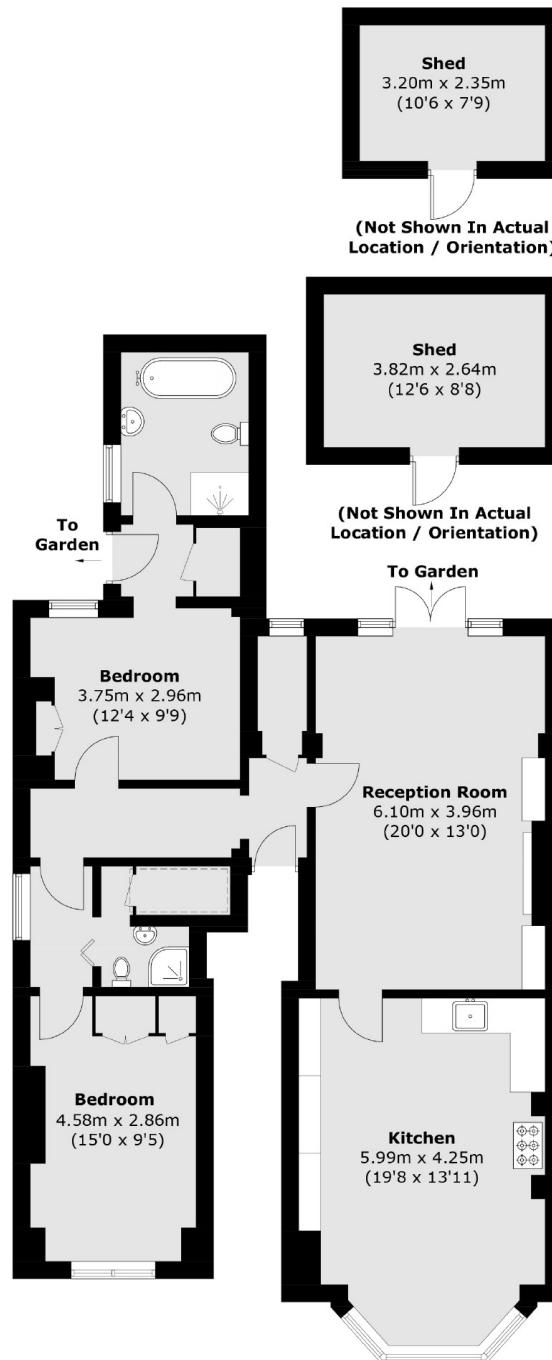
ABOUT THE HOME

A large and well proportioned Victorian garden conversion flat, located at the top of a popular tree-lined road in-between Streatham Hill and Tulse Hill station. The flat has a large square footage, off-street parking, large garden and is being sold share of freehold.

Palace Road is of the most sought-after streets in the Streatham Hill/Tulse Hill area, perfectly positioned for both Streatham & Dulwich High streets and within easy reach of Tulse Hill station providing fast rail links to the city. The green open spaces at Brockley park are also nearby.







Total area (approx.): 98.3 sq. m (1,058.1 sq. ft)
Sheds area (approx.): 17.8 sq. m (191.6 sq. ft)

JACKSONS STREATHAM

1-3 De Montfort Parade,
Streatham High Road,
Sales: 020 8487 3179
Lettings: 020 8487 3180

Energy Rating: D We aim to make our particulars both accurate and reliable. However they are not guaranteed; nor do they form part of an offer or contract. If you require clarification on any points then please contact us, especially if you're traveling some distance to view. Please note that appliances and heating systems have not been tested and therefore no warranties can be given as to their good working order.