



HOPTON ROAD, SW16

£550,000

- Two double bedrooms
- Recently modernised
- Large split garden
- Great connections
- Demised basement
- Energy rating: D

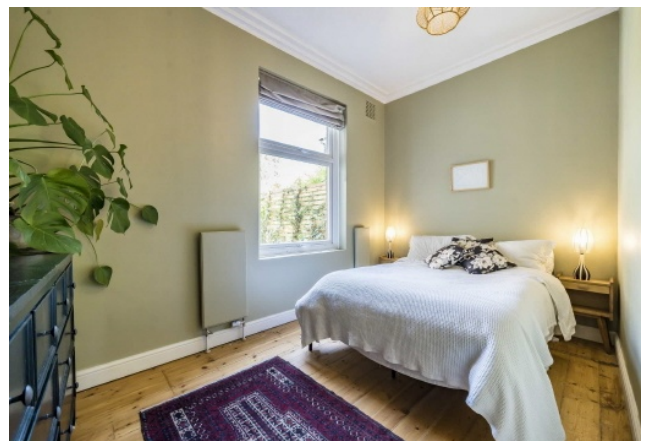




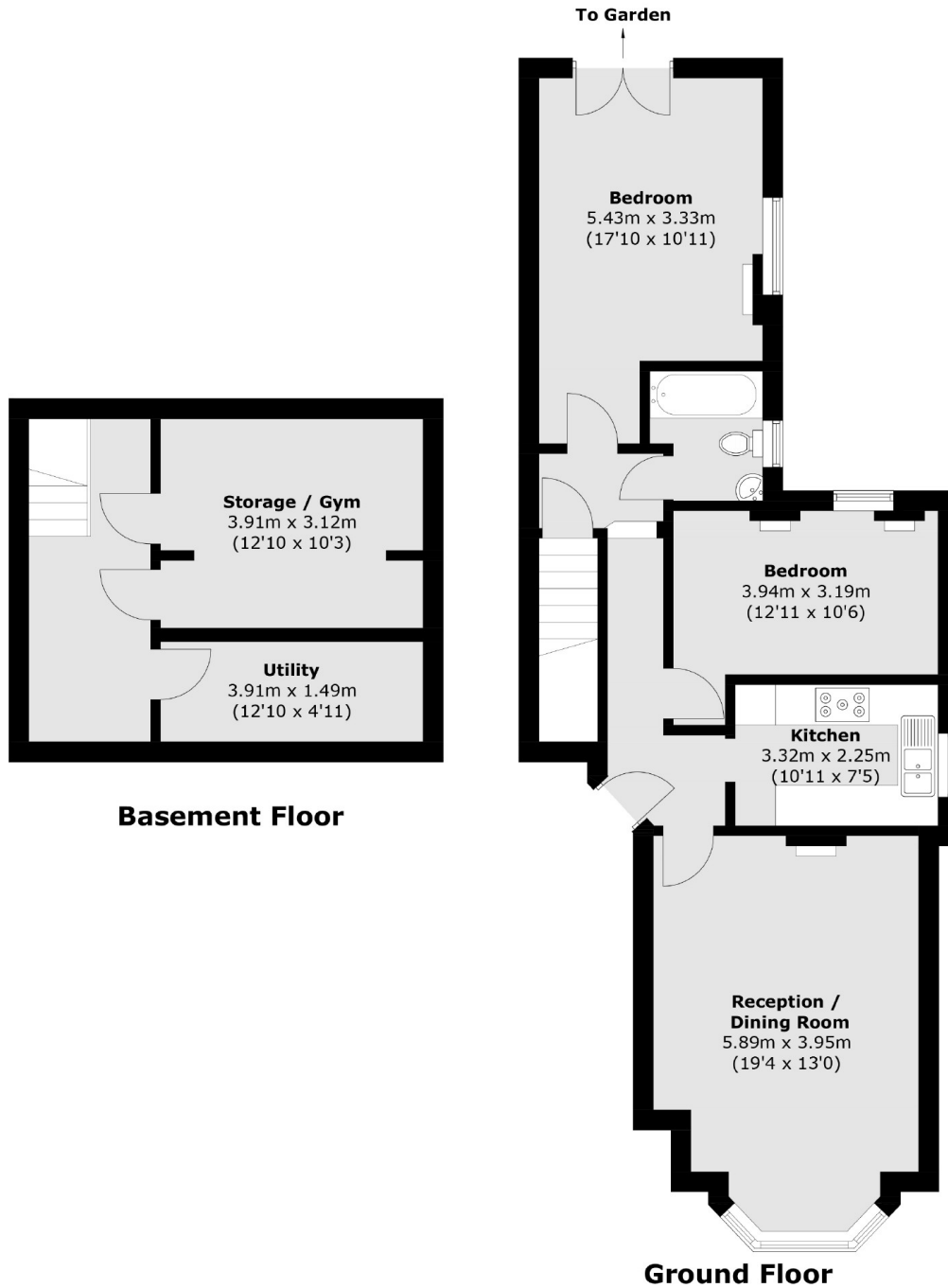
## ABOUT THE HOME

A beautifully presented two bedroom ground floor Victorian conversion situated in the heart of Streatham. The property boasts a large split rear garden and charming period features throughout the property.

Hopton Road is a quiet residential street conveniently located off Streatham High Road. Numerous amenities are close by, including; independent pubs, restaurants and coffee shops, alongside several supermarkets, a leisure centre and Streatham Common. Streatham mainline station is also in close proximity and offers commuters quick services in to London Bridge and the Thameslink line via Blackfriars.







Total area (approx.): 97.9 sq. m (1,053.7 sq. ft)  
(Including Basement)

### JACKSONS STREATHAM

1-3 De Montfort Parade,  
Streatham High Road,  
Sales: 020 8487 3179  
Lettings: 020 8487 3180

Energy Rating: D We aim to make our particulars both accurate and reliable. However they are not guaranteed; nor do they form part of an offer or contract. If you require clarification on any points then please contact us, especially if you're traveling some distance to view. Please note that appliances and heating systems have not been tested and therefore no warranties can be given as to their good working order.