



CHURCH LANE, SW17

£825,000

- Stunning Victorian Conversion
- 3 Double Bedrooms
- 3 Bathrooms (2 En-Suite)
- Open Plan Reception
- Full West Facing Garden
- No Onward Chain





ABOUT THE HOME

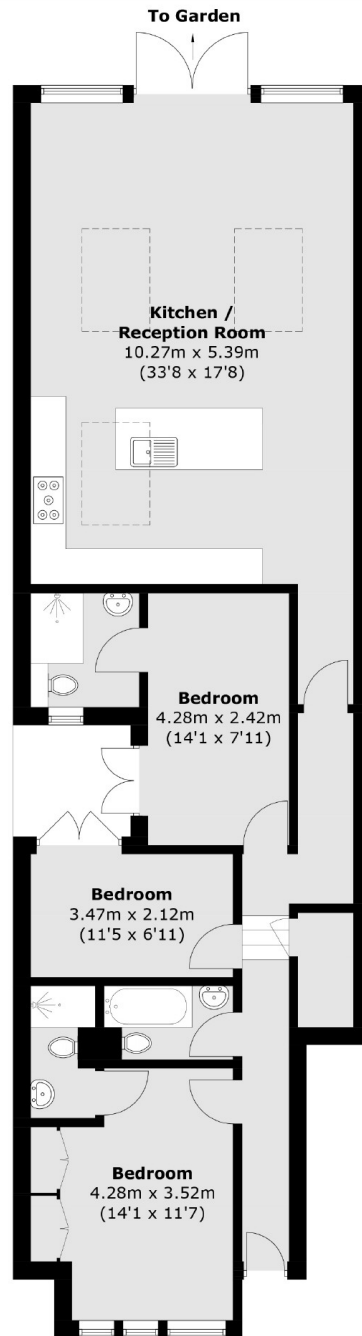
A stunning 3 double bedroom, 3 bathroom ground floor Victorian conversion that has just benefited from a complete renovation. Sold with no onward chain and will be allocated a share of the freehold post completion.

As you enter the property the layout comprises; A spacious double bedroom with en-suite bathroom. Two further bathrooms, one with en-suite and access to wonderful courtyard terrace. A fully tiled family bathroom and finally at the rear you will find a capacious open plan kitchen / reception room with full width bi-folding viewings leading out onto a recently landscaped west facing garden.

Church Lane is a popular Victorian tree lined road, located within moments of Tooting Bec Common, Balham is a short walk as well as large range of bars, restaurant and coffee shops along Tooting High Street. Where you will also find the very popular Tooting Market.







Total area (approx.): 102.8 sq. m (1,106.5 sq. ft)

JACKSONS TOOTING

3 Upper Tooting Road, London,
SW17 7TS

Sales: 020 8487 3175

Lettings: 020 8487 3176

Energy Rating: We aim to make our particulars both accurate and reliable. However they are not guaranteed; nor do they form part of an offer or contract. If you require clarification on any points then please contact us, especially if you're traveling some distance to view. Please note that appliances and heating systems have not been tested and therefore no warranties can be given as to their good working order.