



Criffel Avenue, SW2

£895,000

A split level, three bedroom, three bathroom Victorian maisonette situated right by Tooting Bec Common. The property has a south facing garden and is situated on a quiet residential road.

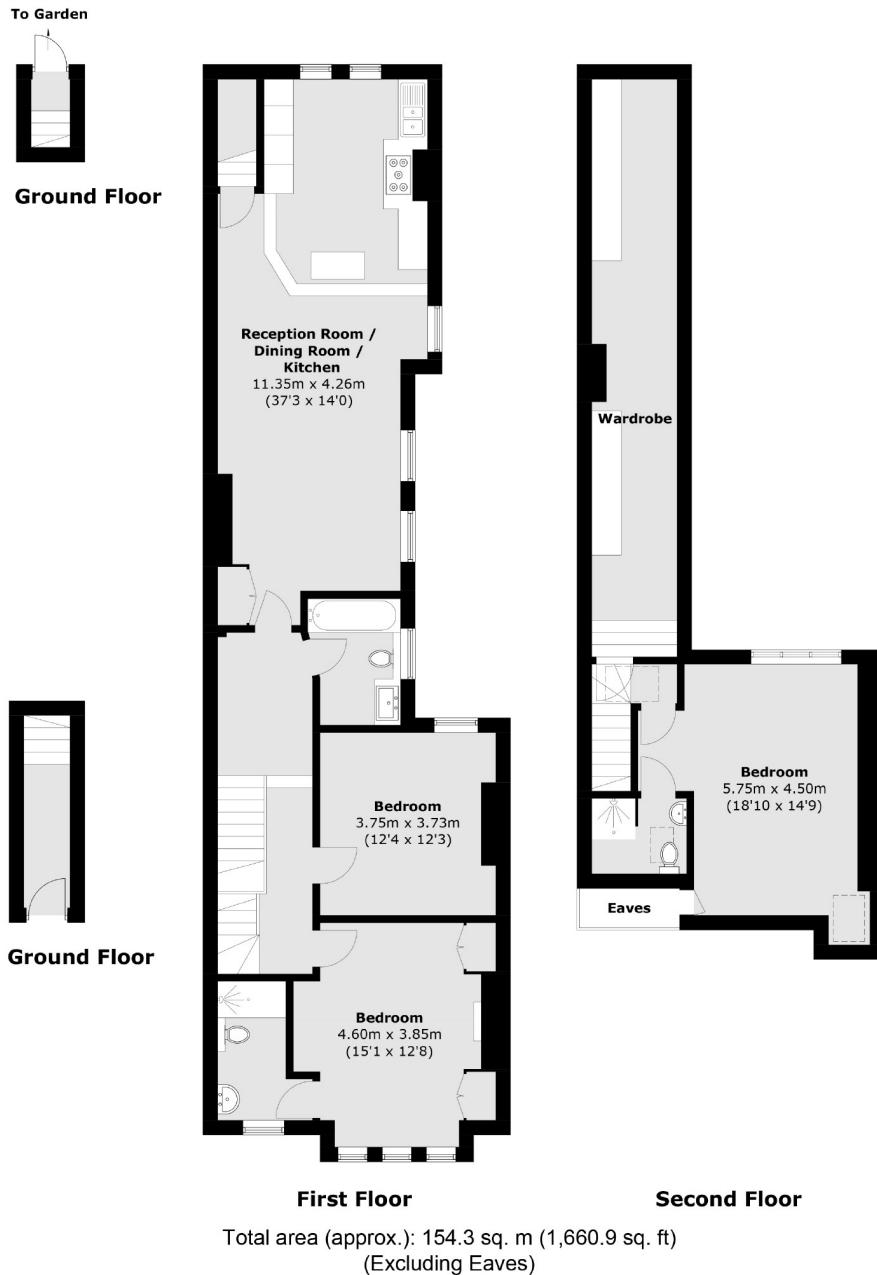
- Three Bedrooms
- Split Level Maisonette
- Victorian
- Three Bathrooms
- Residential Road
- South Facing Garden



Located on Criffel Avenue, this property is well positioned for easy access into Balham and close to all of the shops, bars and restaurants local to the area. Balham mainline and underground stations are within close proximity as is Streatham Hill mainline station. There are excellent bus routes providing access to Brixton for the Victoria line. Also, the green open spaces of Tooting Bec Common are just minutes away.







Jacksons Streatham
1-3 De Montfort Parade
Streatham High Road
Streatham
London
SW16 1BU

Energy Rating: We aim to make our particulars both accurate and reliable. However they are not guaranteed; nor do they form part of an offer or contract. If you require clarification on any points then please contact us, especially if you're traveling some distance to view. Please note that appliances and heating systems have not been tested and therefore no warranties can be given as to their good working order.