



NORFOLK HOUSE ROAD, SW16

£1,295,000

- Victorian family home
- South facing garden
- Five bedrooms
- Close To Tooting Bec Common
- Excellent condition
- Energy rating: D

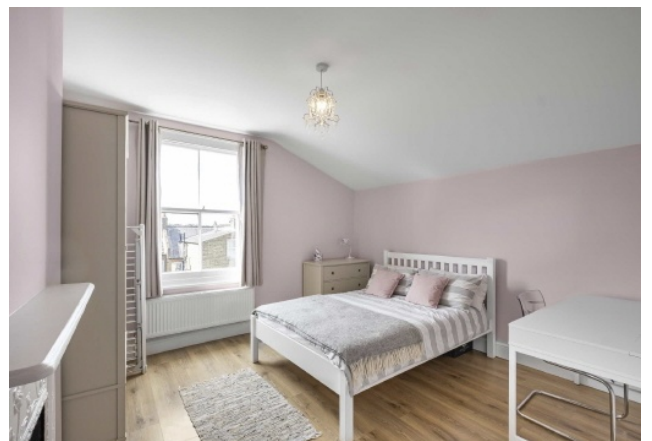




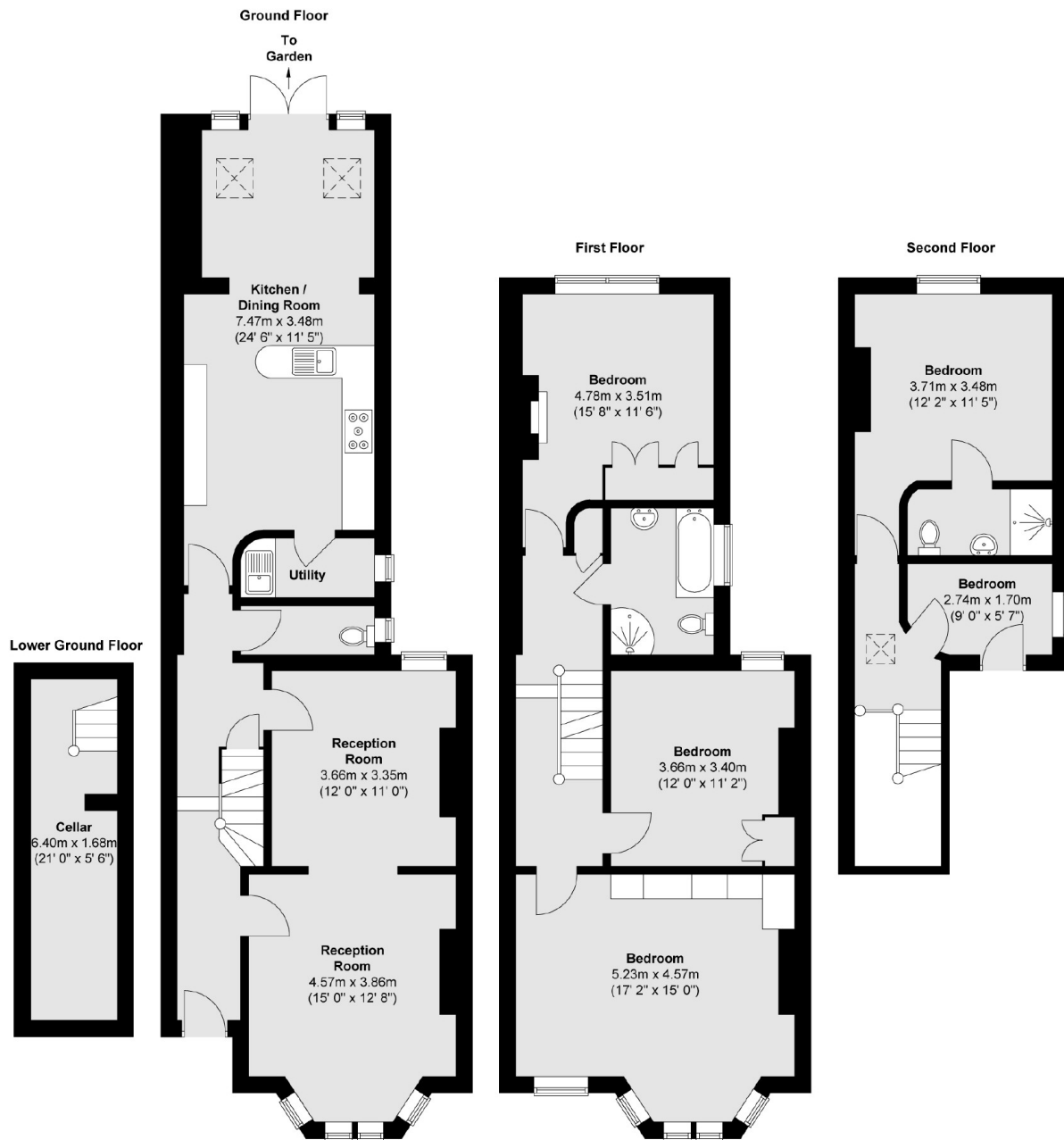
ABOUT THE HOME

A five bedroom Victoria terraced house, in excellent condition in the heart of Streatham Hill. The property has been extended on the ground floor and has further potential to extend on the top floor.

Norfolk House Road is a highly desirable tree lined road situated in the heart of Streatham Hill within reach of amenities from both Streatham High Road and Balham as well as being close to Tooting Bec Common. In addition there are a number of outstanding schools within catchment including Henry Cavendish Primary School. Commuters have easy access to numerous transport links including Streatham Hill station with regular trains to London Victoria and numerous bus routes to the City via Brixton.







Total area (approx.) : 184.8 sq. m (1989 sq. ft)

JACKSONS STREATHAM

1-3 De Montfort Parade,
 Streatham High Road,
 Sales: 020 8487 3179
 Lettings: 020 8487 3180

Energy Rating: D We aim to make our particulars both accurate and reliable. However they are not guaranteed; nor do they form part of an offer or contract. If you require clarification on any points then please contact us, especially if you're traveling some distance to view. Please note that appliances and heating systems have not been tested and therefore no warranties can be given as to their good working order.