



WOODBOURNE AVENUE, SW16

£1,950,000

- Semi-detached family home
- Five bedrooms
- Common-side location
- Large south-facing garden
- Off street parking
- Energy rating:





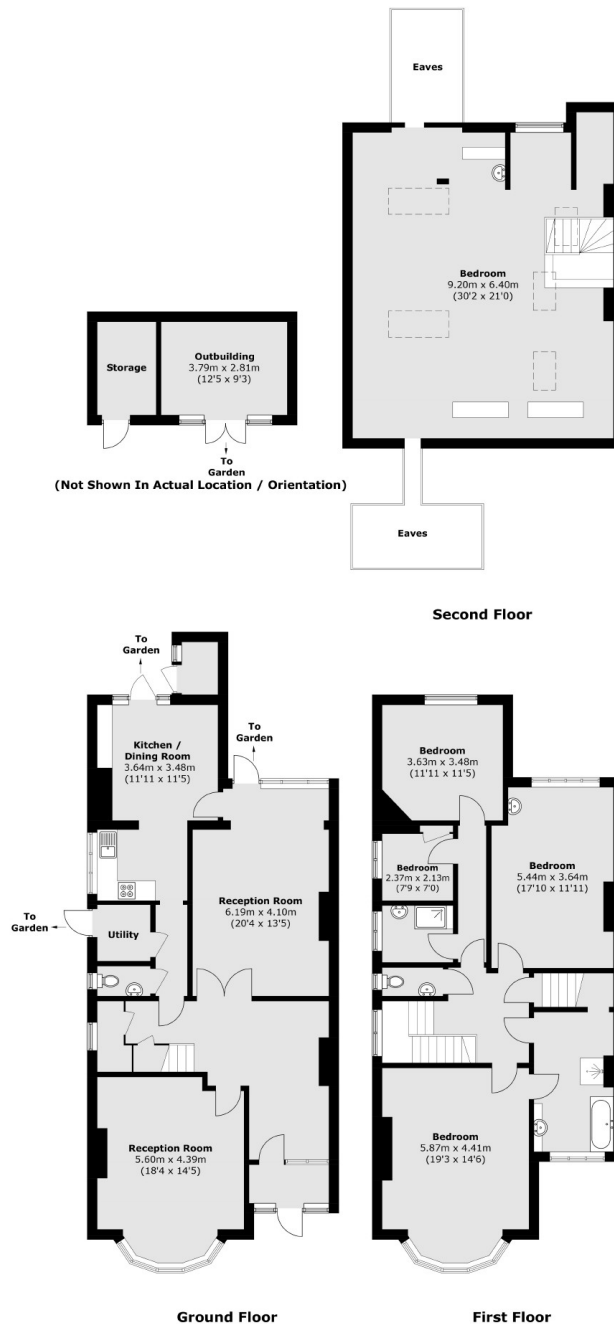
## ABOUT THE HOME

A large semi-detached family home on a highly desirable road off Tooting Bec Common with off street parking. The first and second floors consider of five bedrooms and two bathrooms. The ground floor consists of separate kitchen and reception spilling out onto a lovely south facing garden with additional front reception.

Woodbourne Avenue is one of the most sought after Roads in Streatham. Streatham Hill and Streatham railway stations are both within a short walking distance as are the beautiful open spaces that Tooting Bec common has to offer.







Total area (approx.): 273.1 sq. m (2,939.6 sq. ft)  
(Excluding Eaves)  
Outbuilding / External Cupboard: 18.2 sq. m (195.9 sq. ft)

### JACKSONS STREATHAM

1-3 De Montfort Parade,  
Streatham High Road,  
Sales: 020 8487 3179  
Lettings: 020 8487 3180

Energy Rating: D We aim to make our particulars both accurate and reliable. However they are not guaranteed; nor do they form part of an offer or contract. If you require clarification on any points then please contact us, especially if you're traveling some distance to view. Please note that appliances and heating systems have not been tested and therefore no warranties can be given as to their good working order.