



WOODBOURNE AVENUE, SW16

£300,000

- Period converted flat
- One double bedroom
- Good condition
- Close to Tooting common
- Bike shed
- Energy rating: D





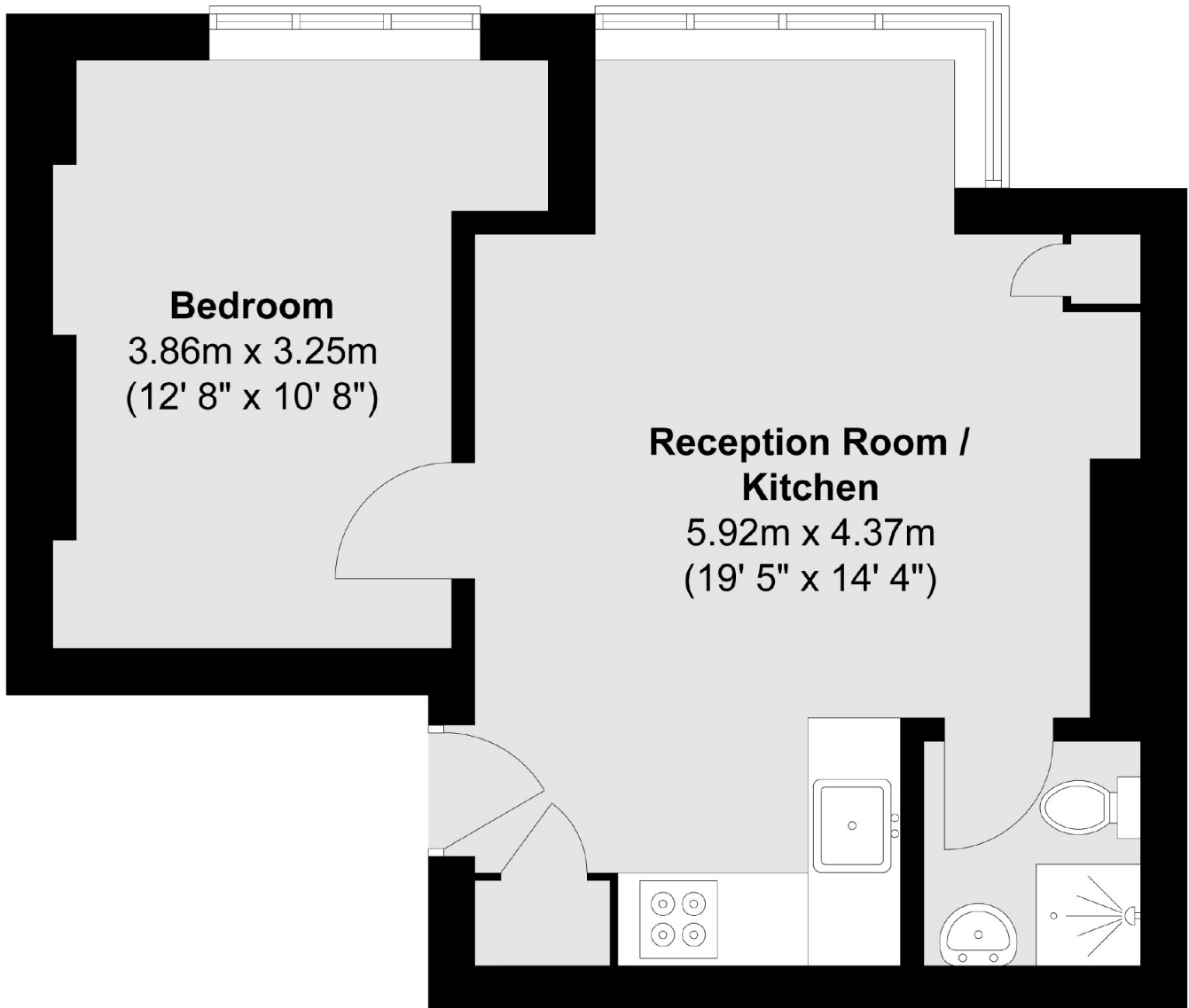
ABOUT THE HOME

A period converted one double bedroom flat, situated just off Tooting Common. This property includes benefits such as off-street parking and is in good condition.

Woodbourne Avenue is one of Streatham's most sought after roads, tree lined with large gardens and close to many local amenities and the green open spaces of Tooting Bec Common. There is a good selection of outstanding state and private schools all within walking distance. Commuters have easy access to an abundance of transport links including numerous bus routes to Balham and Brixton and mainline stations with connections into London and the City.







Total area (approx.) : 35.4 sq. m (381 sq. ft)

JACKSONS STREATHAM

1-3 De Montfort Parade,
Streatham High Road,
Sales: 020 8487 3179
Lettings: 020 8487 3180

Energy Rating: D We aim to make our particulars both accurate and reliable. However they are not guaranteed; nor do they form part of an offer or contract. If you require clarification on any points then please contact us, especially if you're traveling some distance to view. Please note that appliances and heating systems have not been tested and therefore no warranties can be given as to their good working order.