



Gracefield Gardens, SW16

£2,000 PCM

A three bedroom 1930's house presented in good decorative order throughout, ideal for professional sharers or a professional family.

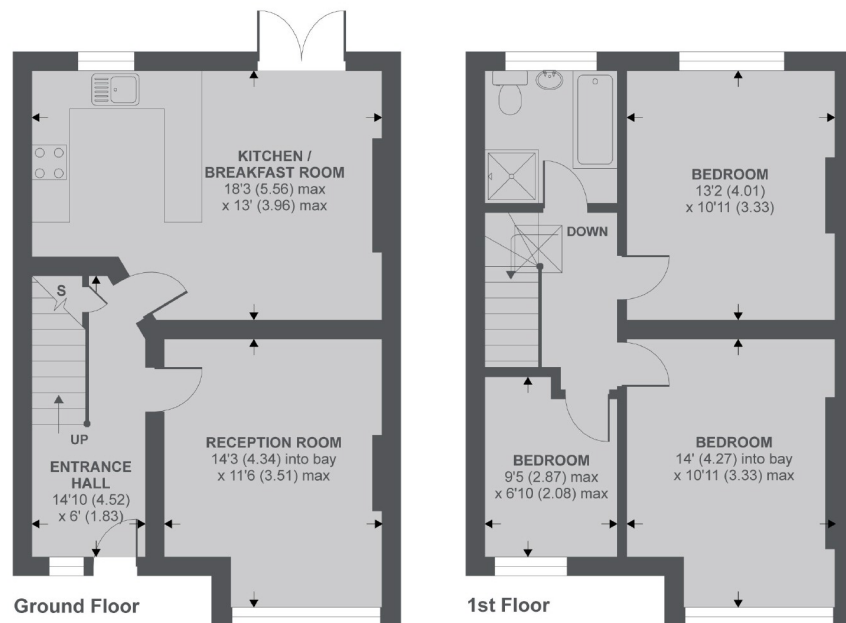
- Reception Room
- Kitchen Breakfast Room
- Three Bedrooms
- Good Decorative Order
- Private Garden
- Furnished

For further information on the costs associated with renting a property, please pop into our office or visit our website.



Gracefield Gardens is a quiet residential road conveniently located close to local shops and amenities and various transport links along Streatham High Road.





APPROX. GROSS INTERNAL FLOOR AREA 992 SQ FT 92.1 SQ METRES

Copyright nichecom.co.uk 2019 REF : 508958

Jacksons Streatham
1-3 De Montfort Parade
Streatham High Road
Streatham
London
SW16 1BU

Energy Rating: D We aim to make our particulars both accurate and reliable. However they are not guaranteed; nor do they form part of an offer or contract. If you require clarification on any points then please contact us, especially if you're traveling some distance to view. Please note that appliances and heating systems have not been tested and therefore no warranties can be given as to their good working order.