



VALLEY ROAD, SW16

£450,000

- Garden flat conversion
- Two double bedrooms
- Close to transport links
- Large garden
- Streatham Common location
- Energy rating: C

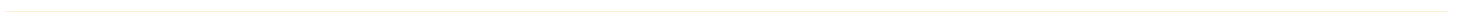




## ABOUT THE HOME

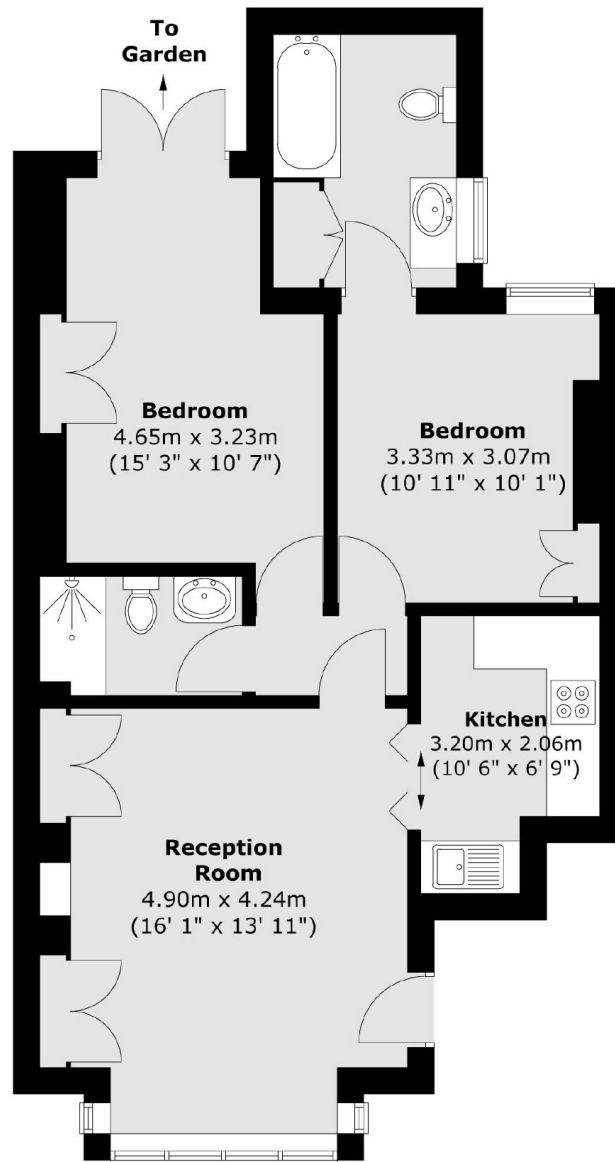
A converted, two double bedroom, ground floor garden flat. This property is close to Streatham Common and benefits from its excellent condition, large private garden and is a short walk to the Rookery Gardens.

Valley Road is well located for all the amenities of the area including: many bars, independent coffee shops, restaurants, several large supermarkets, leisure centre and health clubs. Streatham Common itself and multiple transport links including three train stations and numerous bus routes leading into London are close at hand.









Total area (approx.) : 64.3 sq. m (692 sq. ft)

#### JACKSONS STREATHAM

1-3 De Montfort Parade,  
Streatham High Road,  
Sales: 020 8487 3179  
Lettings: 020 8487 3180

Energy Rating: C We aim to make our particulars both accurate and reliable. However they are not guaranteed; nor do they form part of an offer or contract. If you require clarification on any points then please contact us, especially if you're traveling some distance to view. Please note that appliances and heating systems have not been tested and therefore no warranties can be given as to their good working order.