



KINGSCOURT ROAD, SW16

£650,000

- Victorian conversion
- Two bedrooms
- Excellent condition
- Close by Tooting Bec
- Private garden
- Energy rating: C





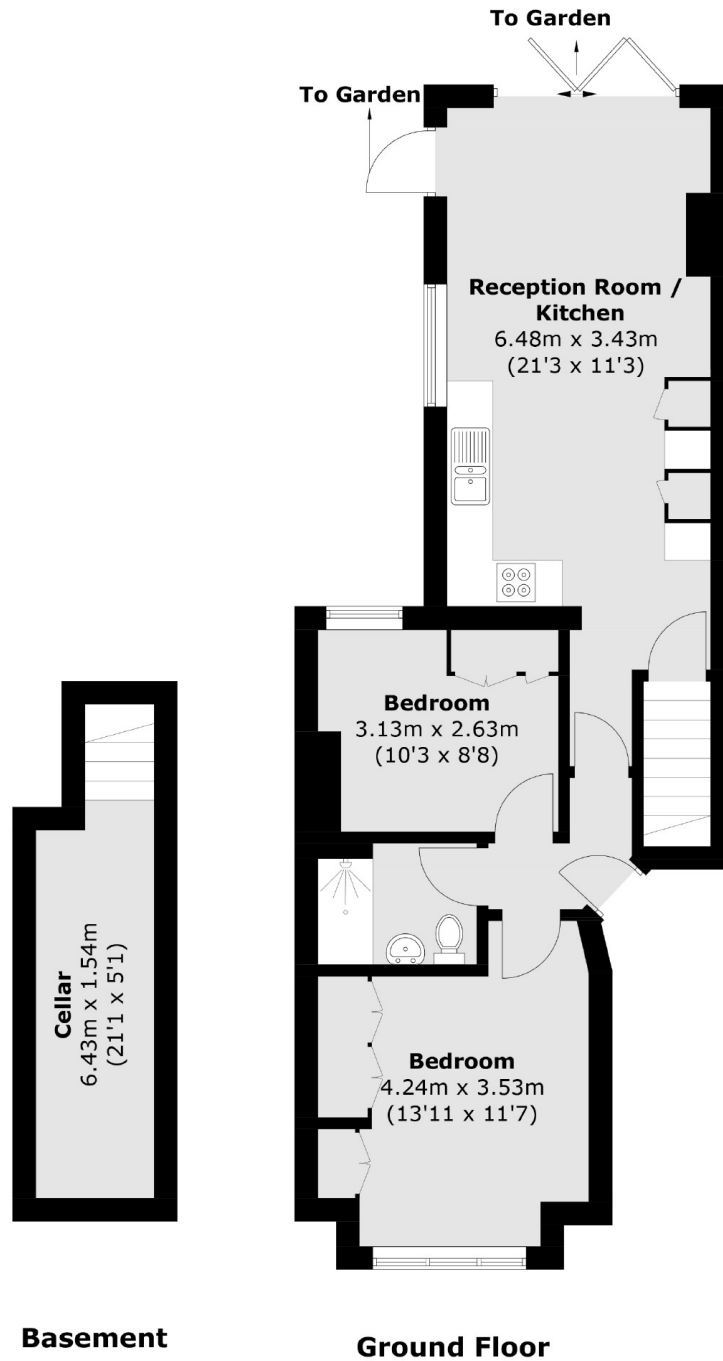
ABOUT THE HOME

This two double bedroom flat is located on a residential road within easy access of shops and stations in the highly desirable Streatham Hill location. The property benefits from large bedrooms and huge amounts of storage, including a cellar.

Kingscourt Road is a few minutes walk from Tooting Bec Common. Local amenities include high street and independent retailers, cafés, coffee shops, numerous eateries, bars, a cinema, leisure centre and health clubs. Transport to Blackfriars via Streatham and London Victoria via Streatham Hill and is also located only a 20 minutes walk away from Balham Tube.







Total area (approx.): 65.1 sq. m (700.7 sq. ft)
(Including Basement)

JACKSONS STREATHAM

1-3 De Montfort Parade,
Streatham High Road,
Sales: 020 8487 3179
Lettings: 020 8487 3180

Energy Rating: C We aim to make our particulars both accurate and reliable. However they are not guaranteed; nor do they form part of an offer or contract. If you require clarification on any points then please contact us, especially if you're traveling some distance to view. Please note that appliances and heating systems have not been tested and therefore no warranties can be given as to their good working order.