



## Norfolk House Road, SW16

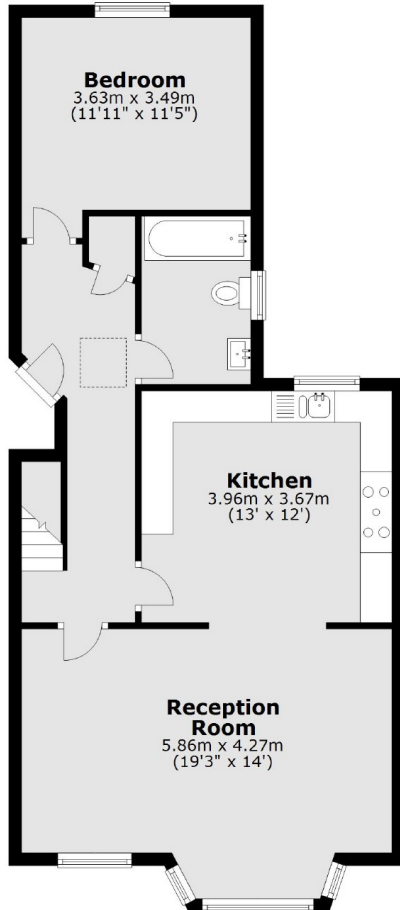
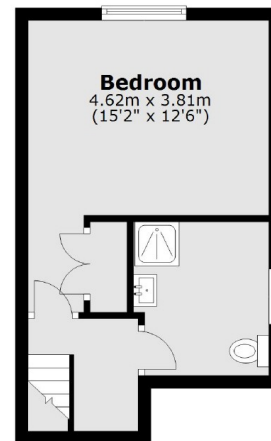
**£2,300 PCM**

This split level, two double bedroom flat is located on a residential road within easy access of shops and station in the highly desirable Streatham Hill location. The property has been recently refurbished and benefits from two large double bedrooms, two bathrooms and is being sold chain free.

Norfolk House Road is a highly desirable tree-lined road situated in the heart of Streatham Hill within reach of amenities from both Streatham High Road and Balham. Commuters have easy access to numerous transport links including Streatham Hill station with regular trains to London Victoria and numerous bus routes to the City via Brixton.

- Victorian Conversion
- Split Level
- Great Condition
- Chain Free
- Streatham Hill
- Share Of Freehold

For further information on the costs associated with renting a property, please pop into our office or visit our website.

**First Floor****Second Floor**

Total area: approx. 88.1 sq. metres (948.2 sq. feet)

Jacksons Streatham  
1-3 De Montfort Parade  
Streatham High Road  
Streatham  
London  
SW16 1BU  
020 8677 9900

Energy Rating: We aim to make our particulars both accurate and reliable. However they are not guaranteed; nor do they form part of an offer or contract. If you require clarification on any points then please contact us, especially if you're traveling some distance to view. Please note that appliances and heating systems have not been tested and therefore no warranties can be given as to their good working order.