



DICKENSWOOD CLOSE, SE19

£1,495,000

- Six bedrooms
- Four bathrooms
- Mature garden
- Private Cul De Sac
- Detached garage
- Energy rating: C





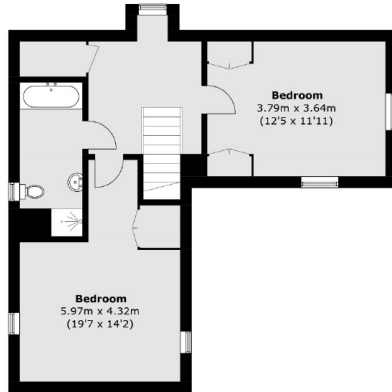
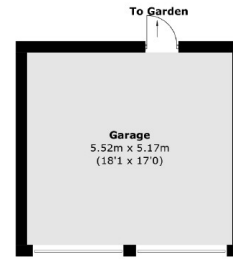
ABOUT THE HOME

A substantial detached family home featuring a mature private garden situated in a private Cul De Sac nearby the green spaces of Streatham Common & The Rookery Gardens.

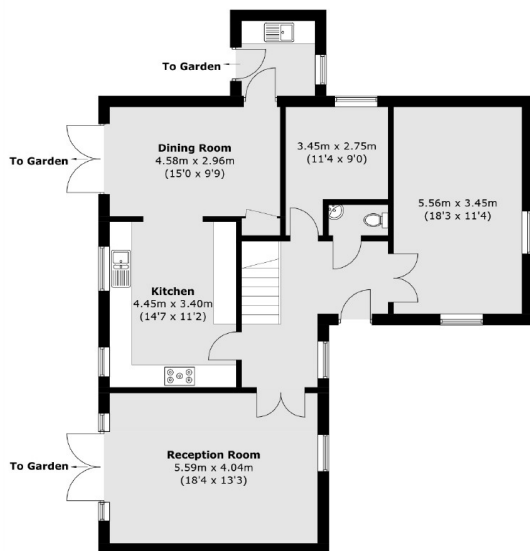
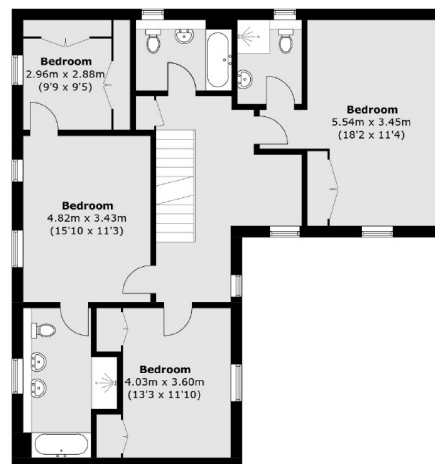
Dickenswood Close is ideally located close to Streatham High Road and the wide variety of bars, cafés and other local amenities it has to offer. Transport links are found at Streatham Common Station, and Norbury train stations providing convenient links to the City. The wide green open spaces of Streatham Common, The Rookery and Norwood Grove are also close by.






Second Floor


(Not Shown In Actual Location / Orientation)


Ground Floor

First Floor

Total area (approx.): 257.9 sq. m (2,775.8 sq. ft)
 Garage (approx.): 28.5 sq. m (306.7 sq. ft)

JACKSONS STREATHAM

1-3 De Montfort Parade,
 Streatham High Road,
 Sales: 020 8487 3179
 Lettings: 020 8487 3180

Energy Rating: C We aim to make our particulars both accurate and reliable. However they are not guaranteed; nor do they form part of an offer or contract. If you require clarification on any points then please contact us, especially if you're traveling some distance to view. Please note that appliances and heating systems have not been tested and therefore no warranties can be given as to their good working order.